

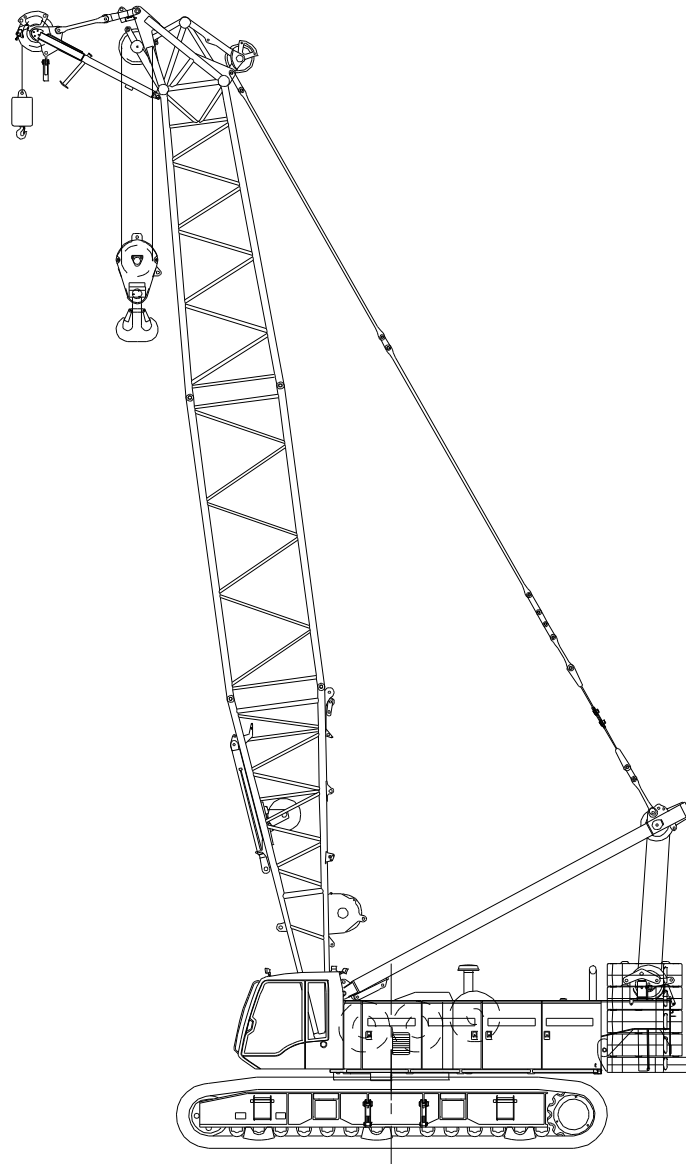


sarens
group

www.sarens.com

LIEBHERR LR 1160

160 TON



nothing too heavy, nothing too high



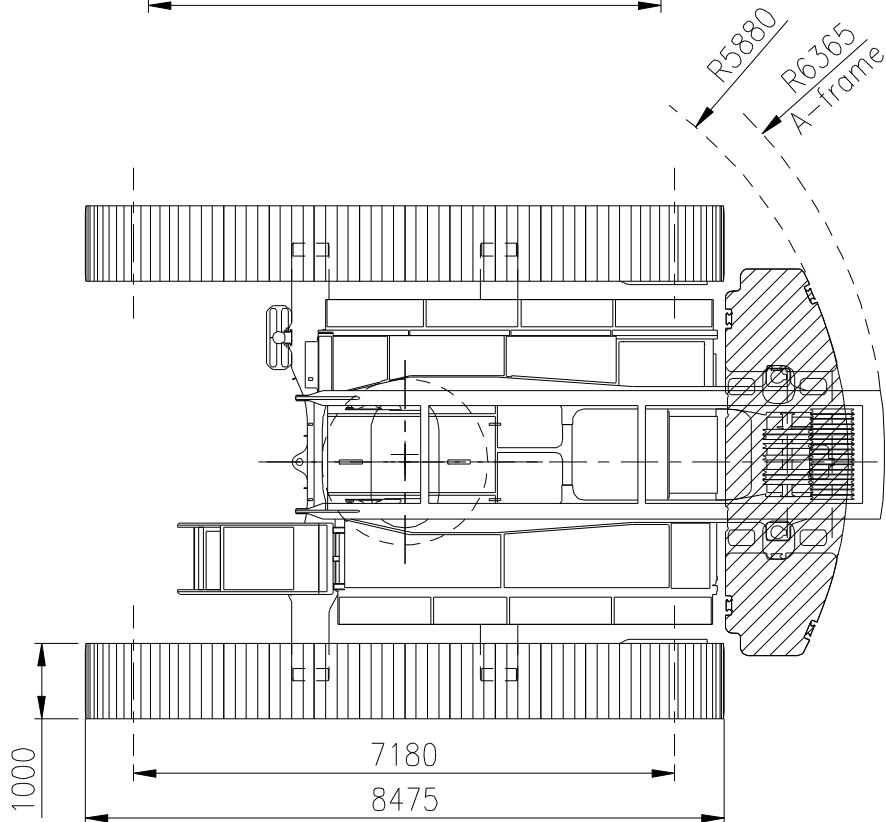
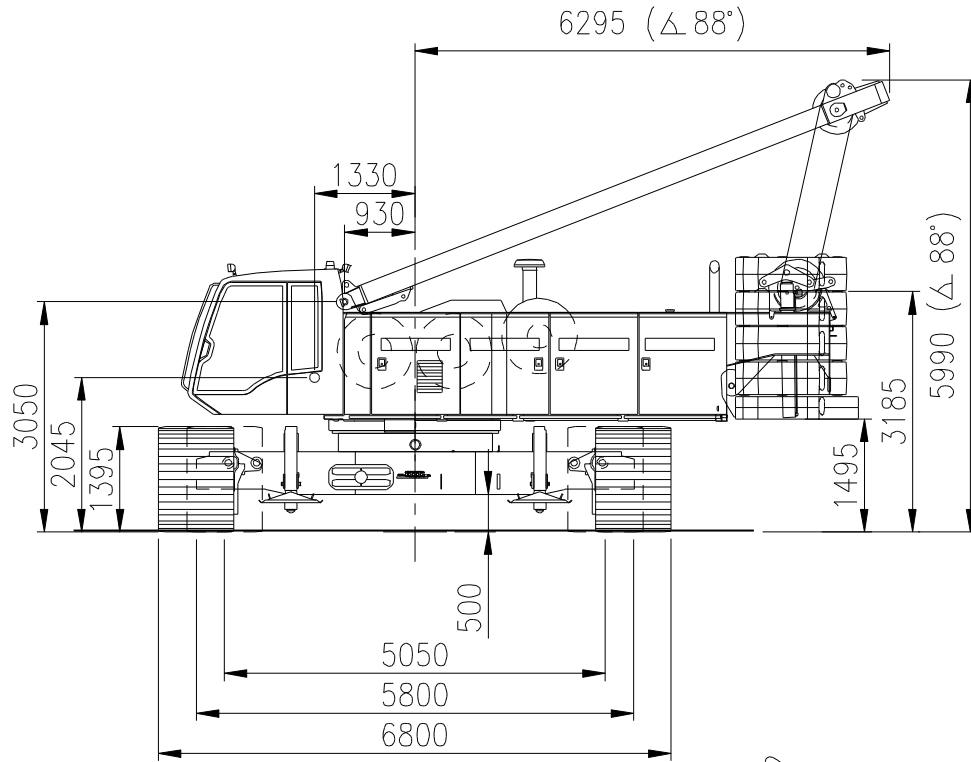


LIEBHERR LR 1160

Dimensions
Dimensions

160 TON

Abmessungen
Afmetingen





LIEBHERR LR 1160

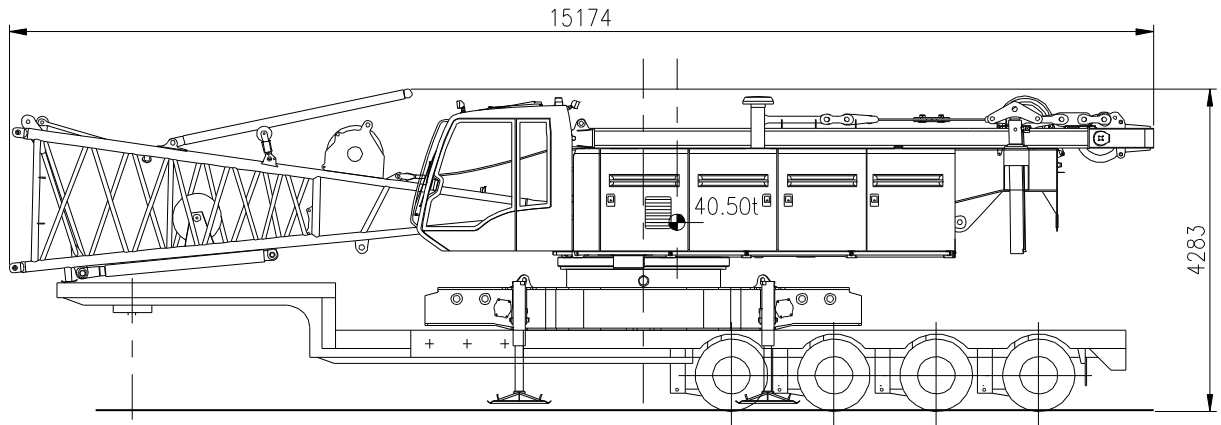
160 TON

**Weight
Poids**

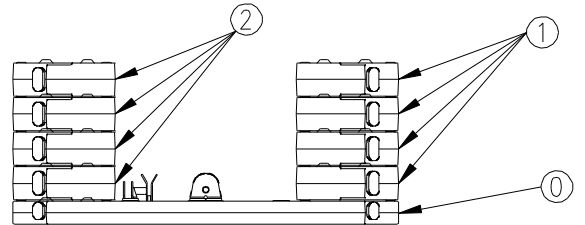
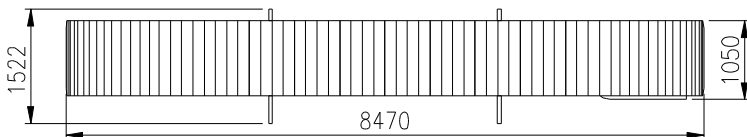
**Gewicht
Gewicht**

Superstructure with carbody Partie supérieure avec carter central Oberwagen mit Mittelstück Bovenwagen met centraal onderstelgedeelte	40.5 t
Crawler unit Bâti de chenille Raupen Rupsen	2 x 18.8 t
Counterweight Contrepoids Gegengewicht Tegengewicht	55 + 15 t

Carbody: 40.50t
15174 x 3500 x 4283 mm

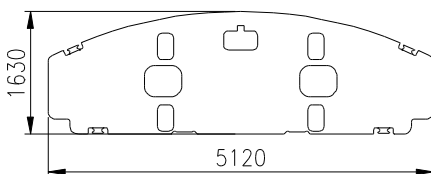


2 x 18.8 t
8470 x 1050 x 1395



1 x 14.3 t
5120 x 1630 x 676 mm

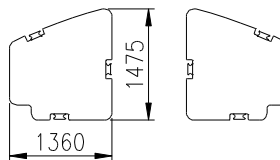
①



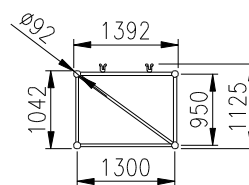
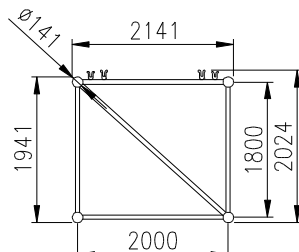
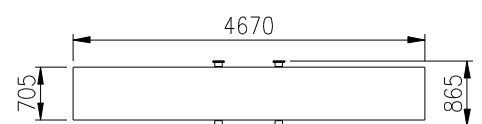
8 x 5.1 t
1475 x 1360 x 495 mm

①

②



CARBODY COUNTERWEIGHT (x2)
5.1t
4670 x 865 x 290





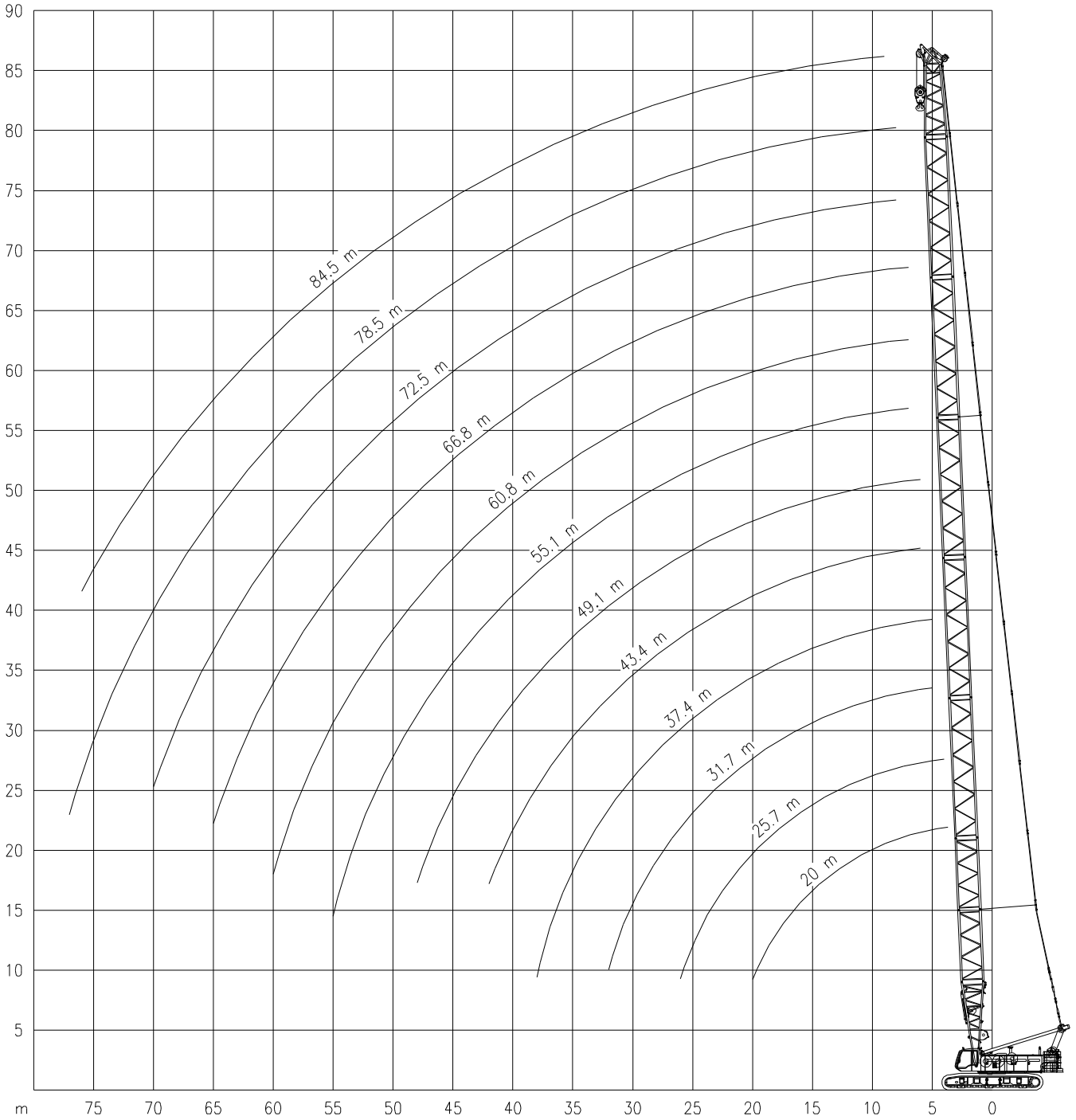
LIEBHERR LR 1160

Working ranges
Portées

160 TON

Arbeitsbereiche
Werkbereich

HPT



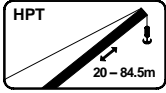


LIEBHERR LR 1160

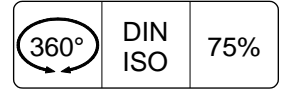
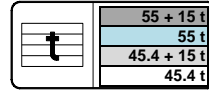
160 TON

Lifting capacities
Capacités

Tragfähigkeiten
Capaciteiten



HPT



m	20.0m	25.7m	31.7m	37.4m	43.4m	49.1m	55.1m	60.8m	66.8m	72.5m	78.5m	84.5m
	t	t	t	t	t	t	t	t	t	t	t	t
3.7	160.0*	-	-	-	-	-	-	-	-	-	-	-
4.0	160.0*	160.0*	-	-	-	-	-	-	-	-	-	-
5.0	140.0	137.0	136.8	121.0	-	-	-	-	-	-	-	-
6.0	138.7	130.8	121.0	111.5	95.3	77.8	-	-	-	-	-	-
7.0	120.2	110.9	102.4	95.4	88.8	75.9	64.2	52.9	41.4	-	-	-
8.0	102.1	95.1	88.6	83.2	78.0	72.7	61.5	51.7	41.2	33.8	27.2	-
9.0	88.6	83.2	78.0	73.6	69.4	65.8	58.9	49.6	40.3	33.3	27.0	21.0
10.0	78.2	73.8	69.6	66.0	62.5	59.4	56.4	47.6	39.4	32.7	26.5	20.6
12.0	61.2	60.1	57.1	54.5	51.9	49.6	47.3	43.6	36.3	31.5	25.5	19.8
14.0	49.4	49.4	48.2	46.2	44.1	42.3	40.5	38.9	33.0	30.2	24.6	19.1
16.0	41.2	41.2	41.1	40.0	38.3	36.8	35.3	33.9	30.2	28.9	23.7	18.5
18.0	35.1	35.2	35.1	34.9	33.7	32.4	31.1	29.9	27.9	27.3	22.8	17.8
20.0	30.4	30.6	30.5	30.3	30.0	28.9	27.7	26.7	25.5	24.6	21.9	17.3
22.0	-	26.9	26.8	26.7	26.4	25.9	24.9	23.9	23.0	22.1	20.9	16.8
24.0	-	23.9	23.8	23.7	23.5	23.2	22.5	21.6	20.7	19.9	19.0	16.2
26.0	-	21.4	21.4	21.3	21.0	20.8	20.5	19.7	18.8	18.1	17.3	15.7
28.0	-	-	19.3	19.2	18.9	18.7	18.4	18.0	17.2	16.5	15.7	14.9
30.0	-	-	17.5	17.4	17.2	17.0	16.7	16.4	15.7	15.0	14.3	13.6
32.0	-	-	16.0	15.9	15.7	15.4	15.1	14.9	14.4	13.8	13.1	12.4
34.0	-	-	-	14.6	14.3	14.1	13.8	13.5	13.2	12.7	12.1	11.3
36.0	-	-	-	13.4	13.2	12.9	12.6	12.4	12.1	11.7	11.1	10.4
38.0	-	-	-	12.1	12.1	11.9	11.6	11.4	11.1	10.8	10.2	9.6
40.0	-	-	-	-	11.2	11.0	10.7	10.5	10.2	9.9	9.4	8.8
42.0	-	-	-	-	10.4	10.1	9.9	9.6	9.3	9.0	8.6	8.0
44.0	-	-	-	-	-	9.4	9.1	8.9	8.6	8.3	8.0	7.4
46.0	-	-	-	-	-	8.7	8.4	8.2	7.9	7.6	7.3	6.8
48.0	-	-	-	-	-	8.0	7.8	7.6	7.3	7.0	6.6	6.2
50.0	-	-	-	-	-	-	7.2	7.0	6.7	6.4	6.1	5.7
55.0	-	-	-	-	-	-	6.0	5.7	5.4	5.2	4.8	4.5
60.0	-	-	-	-	-	-	-	4.7	4.4	4.1	3.8	3.5
65.0	-	-	-	-	-	-	-	-	3.5	3.3	2.9	2.6
70.0	-	-	-	-	-	-	-	-	-	2.5	2.2	1.8
75.0	-	-	-	-	-	-	-	-	-	-	1.5	1.2
76.0	-	-	-	-	-	-	-	-	-	-	1.4	1.1
77.0	-	-	-	-	-	-	-	-	-	-	1.3	-

m	20.0m	25.7m	31.7m	37.4m	43.4m	49.1m	55.1m	60.8m	66.8m	72.5m	78.5m	84.5m
	t	t	t	t	t	t	t	t	t	t	t	t
7.0	-	-	-	-	-	75.9	64.2	52.9	41.4	-	-	-
8.0	-	-	-	-	73.0	68.9	61.5	51.7	41.2	33.8	27.2	-
9.0	-	-	-	68.9	65.0	61.5	58.2	49.6	40.3	33.3	27.0	21.0
10.0	-	-	65.1	61.7	58.4	55.5	52.7	47.6	39.4	32.7	26.5	20.6
12.0	57.3	56.2	53.4	50.9	48.4	46.3	44.1	42.2	36.3	31.5	25.5	19.8
14.0	46.2	46.2	45.0	43.1	41.2	39.5	37.7	36.2	33.0	30.2	24.6	19.1
16.0	38.5	38.5	38.4	37.3	35.7	34.3	32.8	31.5	30.2	28.9	23.7	18.5
18.0	32.8	32.9	32.7	32.6	31.3	30.1	28.9	27.8	26.6	25.5	22.8	17.8
20.0	28.3	28.5	28.4	28.2	27.9	26.8	25.7	24.7	23.6	22.7	21.7	17.3
22.0	-	25.1	25.0	24.8	24.6	24.0	23.0	22.1	21.2	20.3	19.4	16.8
24.0	-	22.3	22.2	22.0	21.8	21.5	20.8	20.0	19.1	18.3	17.5	16.2
26.0	-	19.9	19.9	19.7	19.5	19.2	18.9	18.1	17.3	16.6	15.8	15.0
28.0	-	-	17.9	17.8	17.5	17.3	17.0	16.5	15.7	15.1	14.3	13.6
30.0	-	-	16.2	16.1	15.9	15.6	15.4	15.1	14.4	13.7	13.0	12.3
32.0	-	-	14.7	14.7	14.4	14.2	13.9	13.7	13.2	12.5	11.9	11.2
34.0	-	-	-	13.4	13.2	13.0	12.7	12.4	12.1	11.5	10.9	10.2
36.0	-	-	-	12.3	12.1	11.9	11.6	11.4	11.1	10.6	10.0	9.3
38.0	-	-	-	11.3	11.2	10.9	10.7	10.4	10.1	9.7	9.1	8.5
40.0	-	-	-	-	10.3	10.1	9.8	9.5	9.2	8.9	8.4	7.8
42.0	-	-	-	-	9.5	9.3	9.0	8.7	8.4	8.1	7.7	7.1
44.0	-	-	-	-	-	8.6	8.3	8.0	7.7	7.4	7.0	6.5
46.0	-	-	-	-	-	7.9	7.6	7.4	7.1	6.8	6.4	5.9
48.0	-	-	-	-	-	7.3	7.0	6.8	6.5	6.2	5.9	5.4
50.0	-	-	-	-	-	7.0	6.5	6.2	5.9	5.7	5.3	4.9
55.0	-	-	-	-	-	-	5.3	5.1	4.8	4.5	4.2	3.8
60.0	-	-	-	-	-	-	-	4.1	3.8	3.5	3.2	2.8
65.0	-	-	-	-	-	-	-	-	2.9	2.7	2.4	2.0
70.0	-	-	-	-	-	-	-	-	-	2.0	1.7	1.3
75.0	-	-	-	-	-	-	-	-	-	-	1.0	-

*= Heavy duty boom head required.

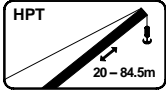


LIEBHERR LR 1160

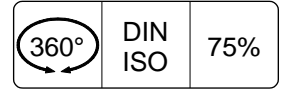
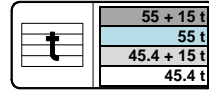
160 TON

Lifting capacities
Capacités

Tragfähigkeiten
Capaciteiten



HPT



m	20.0m	25.7m	31.7m	37.4m	43.4m	49.1m	55.1m	60.8m	66.8m	72.5m	78.5m	84.5m
	t	t	t	t	t	t	t	t	t	t	t	t
3.7	140.0	-	-	-	-	-	-	-	-	-	-	-
4.0	140.0	-	-	-	-	-	-	-	-	-	-	-
5.0	140.0	137.0	131.7	119.6	-	-	-	-	-	-	-	-
6.0	130.4	118.5	108.0	99.5	91.8	77.8	-	-	-	-	-	-
7.0	107.3	98.9	91.3	85.0	79.1	74.2	64.2	52.9	41.4	-	-	-
8.0	91.0	84.8	79.0	74.1	69.4	65.4	61.5	51.7	41.2	33.8	27.2	-
9.0	79.0	74.1	69.5	65.5	61.7	58.5	55.3	49.6	40.3	33.3	27.0	21.0
10.0	69.6	65.7	61.9	58.7	55.5	52.7	50.0	47.6	39.4	32.7	26.5	20.6
12.0	54.4	53.4	50.7	48.3	46.0	43.9	41.8	40.0	36.3	31.5	25.5	19.8
14.0	43.8	43.9	42.7	40.9	39.1	37.4	35.7	34.2	32.7	30.2	24.6	19.1
16.0	36.5	36.5	36.4	35.3	33.8	32.4	31.0	29.8	28.5	27.3	23.7	18.5
18.0	31.0	31.1	31.0	30.9	29.7	28.5	27.3	26.2	25.1	24.0	22.8	17.8
20.0	26.8	27.0	26.9	26.7	26.3	25.3	24.2	23.3	22.3	21.3	20.4	17.3
22.0	-	23.7	23.6	23.4	23.2	22.7	21.7	20.8	19.9	19.1	18.2	16.8
24.0	-	21.0	20.9	20.8	20.5	20.3	19.6	18.8	17.9	17.1	16.3	15.5
26.0	-	18.8	18.7	18.6	18.3	18.1	17.7	17.0	16.2	15.5	14.7	14.0
28.0	-	-	16.9	16.7	16.5	16.3	16.0	15.5	14.7	14.0	13.3	12.6
30.0	-	-	15.3	15.2	14.9	14.7	14.4	14.1	13.4	12.8	12.1	11.4
32.0	-	-	13.8	13.8	13.6	13.3	13.0	12.8	12.3	11.7	11.0	10.4
34.0	-	-	-	12.6	12.4	12.1	11.8	11.6	11.3	10.7	10.0	9.4
36.0	-	-	-	11.6	11.4	11.1	10.8	10.6	10.3	9.8	9.1	8.6
38.0	-	-	-	10.6	10.4	10.2	9.9	9.7	9.3	9.0	8.3	7.8
40.0	-	-	-	-	9.5	9.4	9.1	8.8	8.5	8.2	7.6	7.1
42.0	-	-	-	-	8.8	8.6	8.3	8.1	7.8	7.5	6.9	6.4
44.0	-	-	-	-	-	7.9	7.7	7.4	7.1	6.8	6.3	5.8
46.0	-	-	-	-	-	7.3	7.0	6.8	6.5	6.2	5.8	5.3
48.0	-	-	-	-	-	6.7	6.5	6.2	5.9	5.6	5.2	4.8
50.0	-	-	-	-	-	-	5.9	5.7	5.4	5.1	4.7	4.3
55.0	-	-	-	-	-	-	4.8	4.6	4.3	4.0	3.6	3.2
60.0	-	-	-	-	-	-	-	3.6	3.3	3.1	2.7	2.4
65.0	-	-	-	-	-	-	-	-	2.5	2.3	1.9	1.6
70.0	-	-	-	-	-	-	-	-	-	1.5	1.2	-
71.0	-	-	-	-	-	-	-	-	-	1.4	1.1	-
72.0	-	-	-	-	-	-	-	-	-	-	1.0	-

m	20.0m	25.7m	31.7m	37.4m	43.4m	49.1m	55.1m	60.8m	66.8m	72.5m	78.5m	84.5m
	t	t	t	t	t	t	t	t	t	t	t	t
5.0	136.0	137.0	122.6	111.3	-	-	-	-	-	-	-	-
6.0	121.3	110.2	100.4	92.5	85.3	77.8	-	-	-	-	-	-
7.0	99.8	92.0	84.9	79.0	73.5	68.9	64.2	52.9	41.4	-	-	-
8.0	84.6	78.8	73.4	68.8	64.5	60.7	57.1	51.7	41.2	33.8	27.2	-
9.0	73.4	68.8	64.5	60.8	57.3	54.2	51.2	48.6	40.3	33.3	27.0	21.0
10.0	64.7	61.0	57.5	54.4	51.5	48.9	46.3	44.0	39.4	32.7	26.5	20.6
12.0	50.5	49.6	47.0	44.8	42.6	40.6	38.6	36.9	35.1	31.5	25.5	19.8
14.0	40.6	40.7	39.6	37.9	36.1	34.5	33.0	31.5	30.1	28.8	24.6	19.1
16.0	33.8	33.8	33.7	32.6	31.2	29.9	28.6	27.4	26.1	25.0	23.7	18.5
18.0	28.7	28.8	28.7	28.5	27.3	26.2	25.1	24.0	23.0	22.0	21.0	17.8
20.0	24.8	24.9	24.8	24.6	24.2	23.3	22.2	21.3	20.3	19.5	18.5	17.3
22.0	-	21.9	21.7	21.6	21.3	20.8	19.9	19.0	18.1	17.3	16.5	15.7
24.0	-	19.4	19.3	19.1	18.9	18.6	17.9	17.1	16.3	15.5	14.8	14.0
26.0	-	17.2	17.2	17.1	16.8	16.6	16.2	15.5	14.7	14.0	13.3	12.5
28.0	-	-	15.5	15.3	15.1	14.9	14.6	14.0	13.3	12.6	12.0	11.3
30.0	-	-	14.0	13.9	13.6	13.4	13.1	12.8	12.1	11.5	10.9	10.2
32.0	-	-	12.6	12.6	12.3	12.1	11.9	11.6	11.1	10.5	9.8	9.2
34.0	-	-	-	11.5	11.3	11.1	10.8	10.5	10.1	9.5	8.9	8.3
36.0	-	-	-	10.5	10.3	10.1	9.8	9.5	9.2	8.7	8.1	7.5
38.0	-	-	-	9.6	9.4	9.2	8.9	8.6	8.3	7.9	7.3	6.7
40.0	-	-	-	-	8.6	8.4	8.1	7.9	7.6	7.2	6.6	6.1
42.0	-	-	-	-	7.9	7.7	7.4	7.2	6.9	6.6	6.0	5.5
44.0	-	-	-	-	-	7.1	6.8	6.5	6.2	5.9	5.5	4.9
46.0	-	-	-	-	-	6.5	6.2	6.0	5.6	5.4	4.9	4.4
48.0	-	-	-	-	-	5.9	5.7	5.4	5.1	4.8	4.5	3.9
50.0	-	-	-	-	-	-	5.2	4.9	4.6	4.4	4.0	3.5
55.0	-	-	-	-	-	-	4.1	3.9	3.6	3.3	3.0	2.5
60.0	-	-	-	-	-	-	-	3.0	2.7	2.4	2.1	1.7
65.0	-	-	-	-	-	-	-	-	2.0	1.7	1.4	-
70.0	-	-	-	-	-	-	-	-	-	1.1	-	-

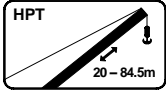


LIEBHERR LR 1160

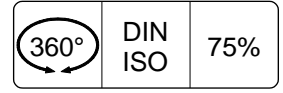
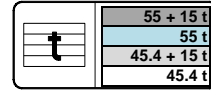
160 TON

Lifting capacities
Capacités

Tragfähigkeiten
Capaciteiten



HPT



m	20.0m	25.7m	31.7m	37.4m	43.4m	49.1m	55.1m	60.8m	66.8m	72.5m	78.5m	84.5m
	t	t	t	t	t	t	t	t	t	t	t	t
9.0	-	-	-	-	-	-	-	-	-	-	27.0	21.0
10.0	-	-	-	-	-	-	-	-	-	32.7	26.5	20.6
12.0	-	-	-	-	-	-	39.3	37.6	35.8	31.5	25.5	19.8
14.0	-	-	-	-	36.8	35.3	33.7	32.3	30.8	29.5	24.6	19.1
16.0	-	-	-	33.4	32.0	30.7	29.3	28.1	26.9	25.7	23.7	18.5
18.0	-	29.6	29.4	29.2	28.1	27.0	25.8	24.8	23.7	22.7	21.6	17.8
20.0	25.5	25.7	25.5	25.4	25.0	24.0	22.9	22.0	21.0	20.1	19.2	17.3
22.0	-	22.6	22.5	22.3	22.0	21.5	20.6	19.7	18.8	18.0	17.1	16.3
24.0	-	20.1	20.0	19.8	19.5	19.3	18.5	17.8	16.9	16.2	15.4	14.6
26.0	-	17.9	17.9	17.7	17.5	17.2	16.8	16.1	15.3	14.6	13.8	13.1
28.0	-	-	16.1	16.0	15.7	15.5	15.2	14.6	13.9	13.2	12.5	11.8
30.0	-	-	14.6	14.5	14.2	14.0	13.7	13.4	12.6	12.1	11.4	10.7
32.0	-	-	13.2	13.2	12.9	12.7	12.4	12.1	11.6	11.0	10.4	9.7
34.0	-	-	-	12.1	11.8	11.6	11.3	11.0	10.6	10.0	9.4	8.8
36.0	-	-	-	11.0	10.8	10.6	10.3	10.0	9.7	9.2	8.6	8.0
38.0	-	-	-	10.1	9.9	9.7	9.4	9.1	8.8	8.4	7.8	7.2
40.0	-	-	-	-	9.1	8.9	8.6	8.3	8.0	7.7	7.1	6.5
42.0	-	-	-	-	8.4	8.2	7.9	7.6	7.3	7.0	6.5	5.9
44.0	-	-	-	-	-	7.5	7.2	7.0	6.7	6.4	5.9	5.3
46.0	-	-	-	-	-	6.9	6.6	6.4	6.1	5.8	5.4	4.8
48.0	-	-	-	-	-	6.4	6.1	5.8	5.5	5.2	4.9	4.3
50.0	-	-	-	-	-	-	5.6	5.3	5.0	4.7	4.4	3.9
55.0	-	-	-	-	-	-	4.5	4.3	4.0	3.7	3.3	2.9
60.0	-	-	-	-	-	-	-	3.3	3.1	2.8	2.4	2.0
65.0	-	-	-	-	-	-	-	-	2.3	2.0	1.7	1.3
70.0	-	-	-	-	-	-	-	-	-	1.4	1.0	1.2

m	20.0m	25.7m	31.7m	37.4m	43.4m	49.1m	55.1m	60.8m	66.8m	72.5m	78.5m	84.5m
	t	t	t	t	t	t	t	t	t	t	t	t
7.0	-	-	-	-	-	-	56.6	52.9	41.4	-	-	-
8.0	-	-	-	-	-	53.5	50.3	47.6	41.2	33.8	27.2	-
9.0	-	-	-	-	50.5	47.9	45.2	42.9	40.3	33.3	27.0	21.0
10.0	-	-	-	48.2	45.5	43.2	41.0	38.9	36.9	32.7	26.5	20.6
12.0	44.7	44.0	41.7	39.8	37.8	36.0	34.3	32.7	31.1	29.6	25.5	19.8
14.0	36.2	36.2	35.3	33.7	32.1	30.7	29.3	28.0	26.6	25.4	24.2	19.1
16.0	30.1	30.2	30.1	29.1	27.8	26.6	25.4	24.3	23.1	22.1	21.0	18.5
18.0	25.7	25.8	25.6	25.5	24.4	23.3	22.3	21.3	20.3	19.4	18.4	17.5
20.0	22.2	22.3	22.2	22.0	21.6	20.7	19.7	18.9	17.9	17.1	16.2	15.4
22.0	-	19.6	19.5	19.3	19.0	18.5	17.6	16.8	16.0	15.2	14.4	13.6
24.0	-	17.3	17.2	17.1	16.8	16.6	15.8	15.1	14.3	13.6	12.8	12.1
26.0	-	15.4	15.4	15.2	15.0	14.7	14.3	13.6	12.8	12.2	11.6	10.8
28.0	-	-	13.8	13.7	13.4	13.2	12.9	12.3	11.7	11.0	10.4	9.7
30.0	-	-	12.4	12.3	12.1	11.9	11.6	11.2	10.5	10.0	9.3	8.7
32.0	-	-	11.3	11.2	11.0	10.8	10.5	10.2	9.6	9.0	8.4	7.7
34.0	-	-	-	10.2	10.0	9.7	9.4	9.2	8.7	8.1	7.5	6.9
36.0	-	-	-	9.3	9.1	8.9	8.6	8.3	7.9	7.4	6.8	6.2
38.0	-	-	-	8.5	8.3	8.1	7.8	7.5	7.2	6.7	6.1	5.5
40.0	-	-	-	-	7.6	7.3	7.1	6.8	6.5	6.0	5.5	4.9
42.0	-	-	-	-	6.9	6.7	6.4	6.2	5.8	5.5	4.9	4.4
44.0	-	-	-	-	-	6.1	5.8	5.6	5.3	4.9	4.4	3.9
46.0	-	-	-	-	-	5.6	5.3	5.0	4.7	4.4	3.9	3.4
48.0	-	-	-	-	-	5.1	4.8	4.6	4.2	4.0	3.5	2.9
50.0	-	-	-	-	-	-	4.4	4.1	3.8	3.5	3.1	2.5
55.0	-	-	-	-	-	-	3.4	3.2	2.8	2.6	2.2	1.7
60.0	-	-	-	-	-	-	-	2.3	2.0	1.8	1.4	-
65.0	-	-	-	-	-	-	-	-	1.3	1.1	-	-



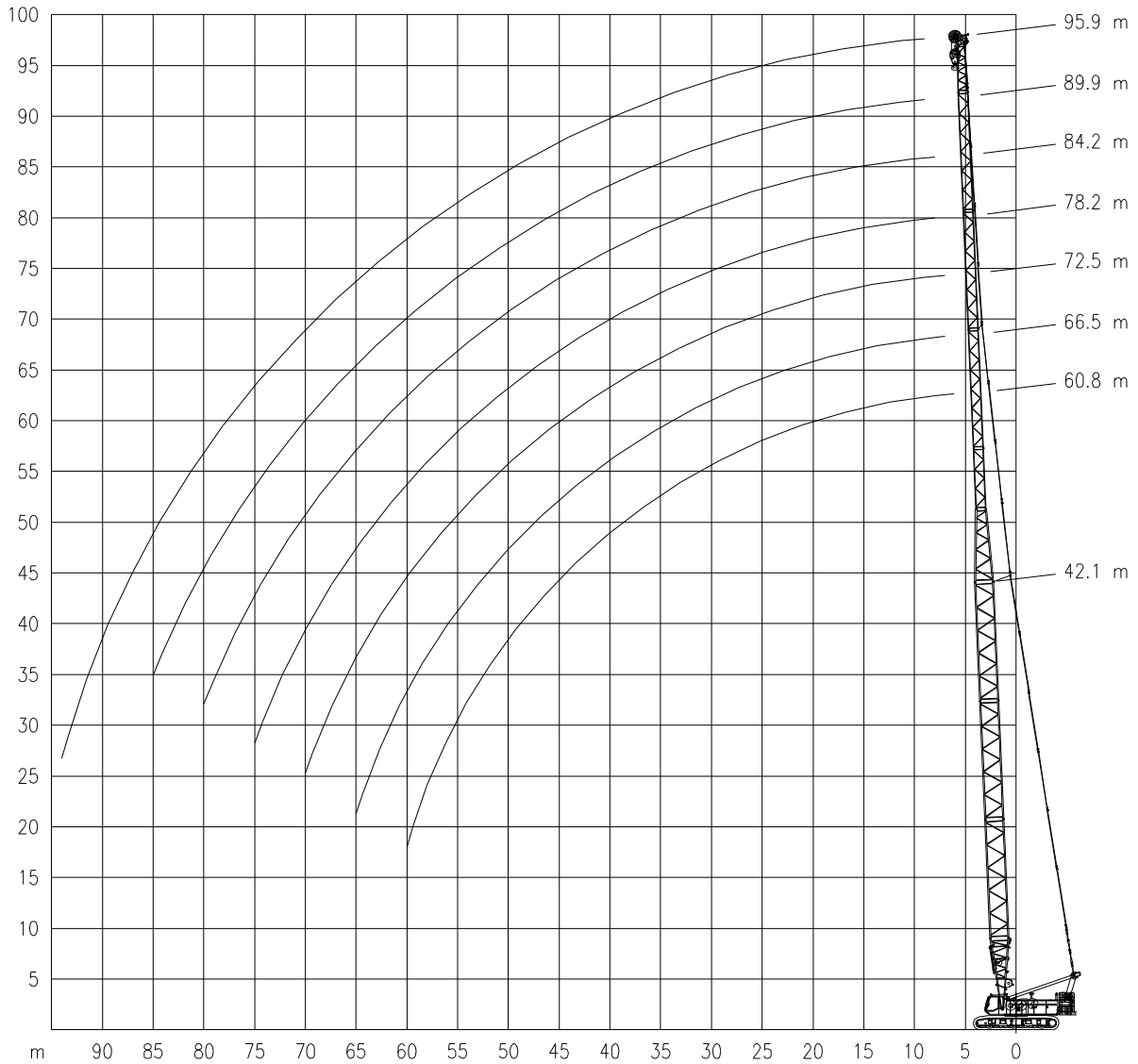
LIEBHERR LR 1160

Working ranges
Portées

160 TON

Arbeitsbereiche
Werkbereich

HPT+RED



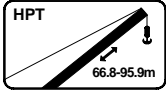


LIEBHERR LR 1160

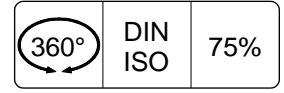
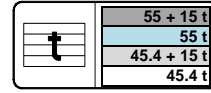
160 TON

Lifting capacities
Capacités

Tragfähigkeiten
Capacités



HPT + RED



m	HPT 48.1m						HPT 42.1m						
	66.8m	72.5m	78.5m	84.2m	90.2m	95.9m	60.8m	66.5m	72.5m	78.2m	84.2m	89.9m	95.9m
	t	t	t	t	t	t	t	t	t	t	t	t	t
6.1	-	-	-	-	-	-	24.0	-	-	-	-	-	-
7.0	24.0	24.0	-	-	-	-	24.0	24.0	24.0	-	-	-	-
8.0	24.0	24.0	20.8	15.3	-	-	24.0	24.0	23.8	18.3	13.2	-	-
9.0	24.0	24.0	20.1	15.1	10.8	7.3	24.0	24.0	23.4	17.9	12.9	9.7	7.3
10.0	24.0	24.0	19.3	14.5	10.4	7.0	24.0	24.0	23.0	17.4	12.6	9.4	7.1
12.0	24.0	23.8	17.9	13.5	9.7	6.5	24.0	24.0	21.7	16.4	11.8	8.9	6.7
14.0	24.0	23.5	16.6	12.5	9.1	6.0	24.0	24.0	20.2	15.4	11.1	8.4	6.3
16.0	23.3	22.8	15.3	11.6	8.6	5.6	24.0	23.0	18.9	14.3	10.4	7.9	5.9
18.0	22.6	21.4	14.4	10.7	8.0	5.2	24.0	21.9	17.9	13.6	9.8	7.3	5.6
20.0	21.9	20.0	13.6	10.2	7.6	4.9	23.5	20.8	16.9	12.8	9.3	7.0	5.3
22.0	20.8	18.5	12.7	9.6	7.2	4.7	21.9	19.7	15.8	12.1	8.8	6.7	5.0
24.0	19.3	17.3	11.9	9.0	6.9	4.5	20.3	18.5	15.1	11.3	8.3	6.3	4.8
26.0	17.8	16.3	11.4	8.4	6.5	4.2	18.6	17.3	14.4	10.9	7.8	6.0	4.5
28.0	16.3	15.2	10.9	8.1	6.1	4.0	17.0	16.2	13.8	10.5	7.4	5.6	4.3
30.0	14.8	14.1	10.5	7.7	5.9	3.8	15.9	15.0	13.2	10.0	7.1	5.4	4.1
32.0	13.8	13.0	10.1	7.4	5.6	3.6	14.9	14.0	12.5	9.6	6.8	5.2	3.9
34.0	13.0	12.1	9.6	7.1	5.4	3.4	13.8	13.2	11.9	9.1	6.5	5.0	3.7
36.0	12.1	11.5	9.2	6.7	5.1	3.3	12.7	12.4	11.3	8.7	6.2	4.7	3.5
38.0	11.3	10.8	8.8	6.4	4.9	3.1	11.6	11.5	10.7	8.5	5.9	4.5	3.3
40.0	10.4	10.2	8.5	6.2	4.6	2.9	10.8	10.7	10.2	8.3	5.7	4.3	3.2
42.0	9.6	9.5	8.2	6.0	4.4	2.7	10.3	9.8	9.6	8.1	5.6	4.1	3.0
44.0	9.0	8.8	7.9	5.9	4.3	2.5	9.7	9.2	8.9	7.8	5.4	4.0	2.8
46.0	8.6	8.1	7.6	5.7	4.2	2.5	9.2	8.8	8.3	7.6	5.3	3.9	2.7
48.0	8.1	7.7	7.2	5.5	4.1	2.4	8.6	8.4	7.9	7.3	5.1	3.8	2.6
50.0	7.7	7.3	6.9	5.4	4.0	2.3	7.9	7.9	7.6	7.1	5.0	3.7	2.6
55.0	6.4	6.4	6.1	4.9	3.7	2.2	7.0	6.6	6.6	6.3	4.6	3.4	2.3
60.0	5.6	5.3	5.3	4.5	3.4	2.0	5.8	5.9	5.5	5.5	4.4	3.2	2.1
65.0	4.8	4.7	4.4	4.1	3.2	1.9	-	5.0	4.9	4.6	4.1	3.1	2.0
70.0	-	4.0	3.9	3.6	3.0	1.8	-	-	4.2	4.1	3.7	2.9	1.9
75.0	-	-	3.3	3.2	2.8	1.6	-	-	-	3.5	3.4	2.7	1.8
80.0	-	-	-	2.6	2.5	1.5	-	-	-	-	2.8	2.5	1.7
85.0	-	-	-	-	2.0	1.4	-	-	-	-	-	2.1	1.5
90.0	-	-	-	-	-	1.3	-	-	-	-	-	-	1.4
94.0	-	-	-	-	-	1.1	-	-	-	-	-	-	1.2

m	HPT 48.1m						HPT 42.1m						
	66.8m	72.5m	78.5m	84.2m	90.2m	95.9m	60.8m	66.5m	72.5m	78.2m	84.2m	89.9m	95.9m
	t	t	t	t	t	t	t	t	t	t	t	t	t
6.5	24.0	-	-	-	-	-	-	-	-	-	-	-	-
7.0	24.0	24.0	-	-	-	-	-	24.0	24.0	-	-	-	-
8.0	24.0	24.0	20.8	15.3	-	-	24.0	24.0	23.8	18.3	13.2	-	-
9.0	24.0	24.0	20.1	15.1	10.8	7.3	24.0	24.0	23.4	17.9	12.9	9.7	7.3
10.0	24.0	24.0	19.3	14.5	10.4	7.0	24.0	24.0	23.0	17.4	12.6	9.4	7.1
12.0	24.0	23.8	17.9	13.5	9.7	6.5	24.0	24.0	21.7	16.4	11.8	8.9	6.7
14.0	24.0	23.5	16.6	12.5	9.1	6.0	24.0	24.0	20.2	15.4	11.1	8.4	6.3
16.0	23.3	22.8	15.3	11.6	8.6	5.6	24.0	23.0	18.9	14.3	10.4	7.9	5.9
18.0	22.6	21.4	14.4	10.7	8.0	5.2	24.0	21.9	17.9	13.6	9.8	7.3	5.6
20.0	21.9	20.0	13.6	10.2	7.6	4.9	23.5	20.8	16.9	12.8	9.3	7.0	5.3
22.0	20.8	18.5	12.7	9.6	7.2	4.7	21.9	19.7	15.8	12.1	8.8	6.7	5.0
24.0	19.3	17.3	11.9	9.0	6.9	4.5	20.3	18.5	15.1	11.3	8.3	6.3	4.8
26.0	17.8	16.3	11.4	8.4	6.5	4.2	18.6	17.3	14.4	10.9	7.8	6.0	4.5
28.0	16.3	15.2	10.9	8.1	6.1	4.0	17.0	16.2	13.8	10.5	7.4	5.6	4.3
30.0	14.8	14.1	10.5	7.7	5.9	3.8	15.9	15.0	13.2	10.0	7.1	5.4	4.1
32.0	13.8	13.0	10.1	7.4	5.6	3.6	14.9	14.0	12.5	9.6	6.8	5.2	3.9
34.0	13.0	12.1	9.6	7.1	5.4	3.4	13.7	13.2	11.9	9.1	6.5	5.0	3.7
36.0	12.1	11.5	9.2	6.7	5.1	3.3	12.6	12.4	11.3	8.7	6.2	4.7	3.5
38.0	11.3	10.8	8.8	6.4	4.9	3.1	11.6	11.5	10.7	8.5	5.9	4.5	3.3
40.0	10.4	10.2	8.5	6.2	4.6	2.9	10.8	10.7	10.2	8.3	5.7	4.3	3.2
42.0	9.6	9.5	8.2	6.0	4.4	2.7	10.0	9.8	9.6	8.1	5.6	4.1	3.0
44.0	8.9	8.8	7.9	5.9	4.3	2.5	9.3	9.2	8.9	7.8	5.4	4.0	2.8
46.0	8.3	8.1	7.6	5.7	4.2	2.5	8.6	8.6	8.3	7.6	5.3	3.9	2.7
48.0	7.7	7.7	7.2	5.5	4.1	2.4	8.1	8.0	7.9	7.3	5.1	3.8	2.6
50.0	7.2	7.1	6.9	5.4	4.0	2.3	7.5	7.5	7.3	7.1	5.0	3.7	2.6
55.0	6.0	6.0	5.8	4.9	3.7	2.2	6.4	6.3	6.2	6.1	4.6	3.4	2.3
60.0	5.1	5.0	4.9	4.5	3.4	2.0	5.4	5.3	5.2	5.1	4.4	3.2	2.1
65.0	4.2	4.2	4.1	4.0	3.2	1.9	-	4.5	4.4	4.3	4.1	3.1	2.0
70.0	-	3.5	3.4	3.3	3.0	1.8	-	-	3.7	3.6	3.5	2.9	1.9
75.0	-	-	2.8	2.7	2.6	1.6	-	-	-	3.0	2.9	2.7	1.8
80.0	-	-	-	2.2	2.0	1.5	-	-	-	-	2.4	2.2	1.7
85.0	-	-	-	-	1.6	1.4	-	-	-	-	-	1.8	1.5
90.0	-	-	-	-	-	1.1	-	-	-	-	-	-	1.2
92.0	-	-	-	-	-	-	-	-	-	-	-	-	1.1



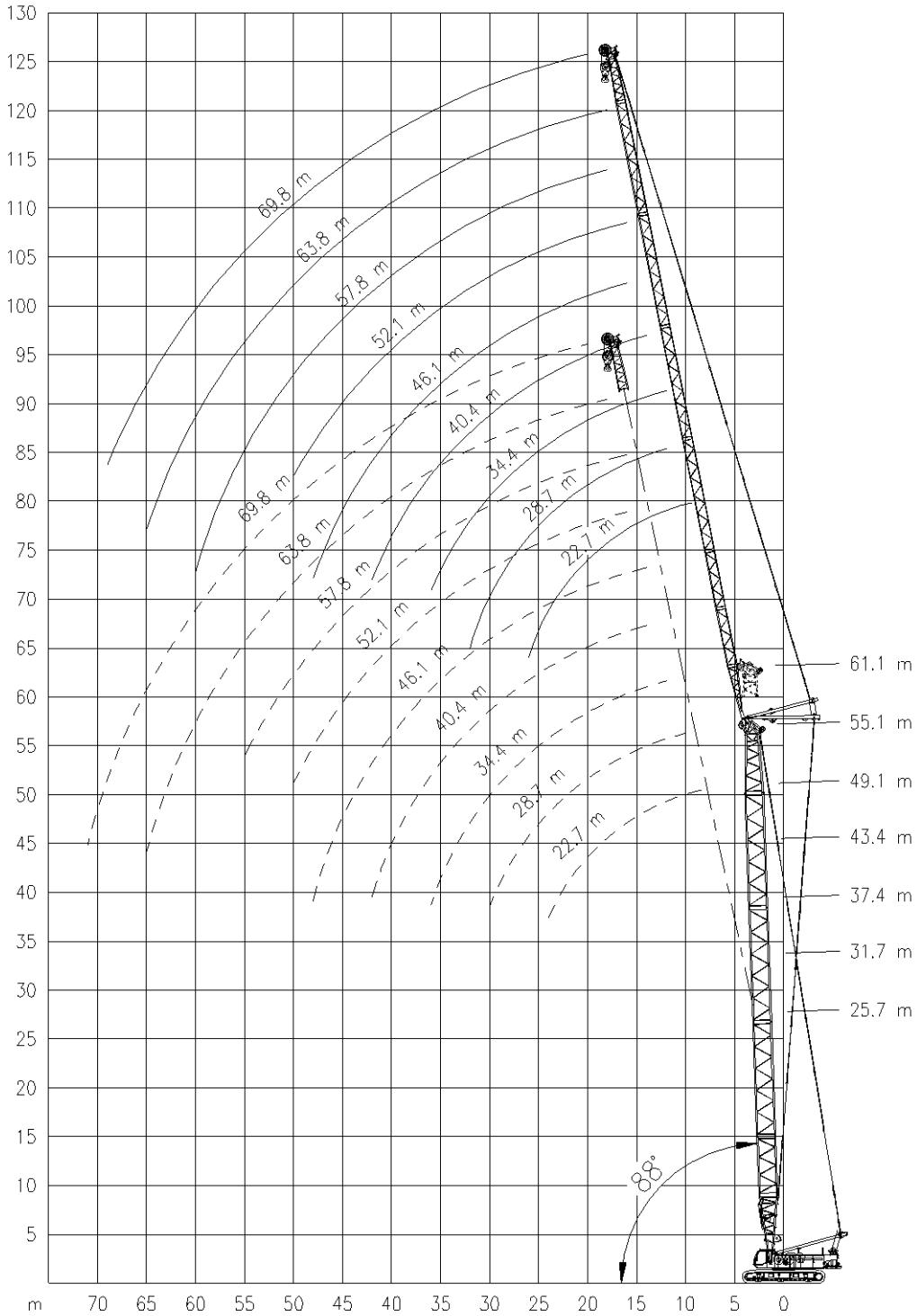
LIEBHERR LR 1160

Working ranges
Portées

160 TON

Arbeitsbereiche
Werkbereich

NDL-88°





LIEBHERR LR 1160

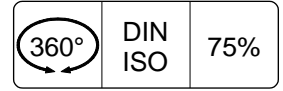
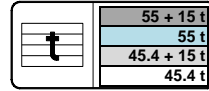
Lifting capacities
Capacités

160 TON

Tragfähigkeiten
Capacités



NDL-88°



m	25.7 m									31.7 m								
	22.7 m	28.7 m	34.4 m	40.4 m	46.1 m	52.1 m	57.8 m	63.8 m	69.8 m	22.7 m	28.7 m	34.4 m	40.4 m	46.1 m	52.1 m	57.8 m	63.8 m	69.8 m
t	t	t	t	t	t	t	t	t	t	t	t	t	t	t	t	t	t	t
7.0	8.4m	-	-	-	-	-	-	-	-	8.6m	-	-	-	-	-	-	-	-
8.0	47.6	-	-	-	-	-	-	-	-	44.6	-	-	-	-	-	-	-	-
9.0	47.6	-	-	-	-	-	-	-	-	44.6	-	-	-	-	-	-	-	-
10.0	46.9	37.1	-	-	-	-	-	-	-	43.8	34.4	-	-	-	-	-	-	-
12.0	42.4	35.4	28.4	-	-	-	-	-	-	38.3	33.1	26.6	-	-	-	-	-	-
14.0	34.8	32.7	26.6	19.3	16.4	-	-	-	-	32.1	30.4	25.2	18.5	15.4	-	-	-	-
16.0	29.3	28.2	24.6	18.2	15.7	12.0	10.1	-	-	27.2	26.2	23.6	17.6	15.1	11.6	9.7	-	-
18.0	24.1	24.0	22.3	17.3	15.0	11.4	9.7	8.1	-	22.8	22.2	21.1	16.7	14.5	11.0	9.4	7.8	-
20.0	21.0	20.7	19.9	16.5	14.4	10.9	9.3	7.8	5.5	19.9	19.6	18.5	15.7	13.9	10.6	9.0	7.6	5.3
22.0	17.4	17.7	17.7	15.7	13.9	10.3	8.9	7.6	5.3	16.9	16.7	16.5	14.8	13.2	10.1	8.6	7.3	5.1
24.0	15.8	15.9	15.3	14.6	13.3	10.0	8.6	7.3	5.1	15.2	15.2	14.5	13.7	12.5	9.7	8.3	7.1	5.0
26.0	-	14.0	13.4	13.4	12.7	9.7	8.4	7.1	5.0	-	13.5	12.7	12.6	11.7	9.4	8.1	6.9	4.8
28.0	-	12.6	12.5	12.0	11.8	9.3	8.1	6.9	4.8	-	12.1	11.8	11.4	11.0	9.1	7.9	6.7	4.7
30.0	-	11.7	11.4	11.0	10.9	9.0	7.9	6.7	4.7	-	11.4	10.9	10.4	10.2	8.7	7.7	6.6	4.6
32.0	-	-	10.4	10.3	9.9	8.7	7.7	6.6	4.6	-	-	10.0	9.8	9.3	8.4	7.5	6.4	4.4
34.0	-	-	9.9	9.6	9.2	8.4	7.5	6.4	4.4	-	-	9.5	9.1	8.6	8.0	7.2	6.2	4.3
36.0	-	-	9.2	8.7	8.6	8.0	7.3	6.2	4.3	-	-	8.9	8.4	8.1	7.5	6.9	6.0	4.2
38.0	-	-	-	8.2	8.0	7.6	7.1	6.1	4.2	-	-	-	7.8	7.6	7.1	6.7	5.8	4.1
40.0	-	-	-	7.8	7.4	7.2	6.9	5.9	4.1	-	-	-	7.4	7.1	6.7	6.4	5.6	4.0
42.0	-	-	-	7.2	6.8	6.7	6.5	5.8	4.0	-	-	-	6.9	6.5	6.3	6.1	5.4	3.9
44.0	-	-	-	-	6.5	6.2	6.1	5.6	3.9	-	-	-	-	6.2	5.9	5.7	5.1	3.8
46.0	-	-	-	-	6.1	5.7	5.7	5.3	3.8	-	-	-	-	5.9	5.4	5.4	4.9	3.8
48.0	-	-	-	-	5.5	5.4	5.3	5.0	3.7	-	-	-	-	5.4	5.1	5.0	4.6	3.7
50.0	-	-	-	-	-	5.1	4.8	4.7	3.6	-	-	-	-	4.9	4.6	4.6	4.3	3.5
55.0	-	-	-	-	-	-	4.2	3.8	3.2	-	-	-	-	-	3.9	3.5	3.0	3.0
60.0	-	-	-	-	-	-	-	3.2	2.7	-	-	-	-	-	-	3.0	2.5	2.5
65.0	-	-	-	-	-	-	-	2.5	2.3	-	-	-	-	-	-	2.4	2.1	2.1
70.0	-	-	-	-	-	-	-	-	1.8	-	-	-	-	-	-	-	1.7	1.7
71.0	-	-	-	-	-	-	-	-	1.7	-	-	-	-	-	-	-	-	1.5

m	37.4 m									43.4 m								
	22.7 m	28.7 m	34.4 m	40.4 m	46.1 m	52.1 m	57.8 m	63.8 m	69.8 m	22.7 m	28.7 m	34.4 m	40.4 m	46.1 m	52.1 m	57.8 m	63.8 m	69.8 m
t	t	t	t	t	t	t	t	t	t	t	t	t	t	t	t	t	t	t
8.8	39.9	-	-	-	-	-	-	-	-	35.1	-	-	-	-	-	-	-	-
9.0	39.9	-	-	-	-	-	-	-	-	35.1	-	-	-	-	-	-	-	-
10.0	39.5	-	-	-	-	-	-	-	-	34.8	-	-	-	-	-	-	-	-
12.0	34.7	30.7	24.7	-	-	-	-	-	-	31.0	27.6	22.8	-	-	-	-	-	-
14.0	29.6	27.6	23.7	17.7	14.4	-	-	-	-	26.7	24.8	22.0	16.6	14.0	-	-	-	-
16.0	25.3	24.1	22.3	16.8	14.2	11.1	-	-	-	23.1	21.8	20.2	15.9	13.6	10.7	-	-	-
18.0	21.6	20.7	19.9	16.0	13.8	10.7	9.1	7.5	-	20.1	18.9	18.1	15.2	13.2	10.2	8.7	7.0	-
20.0	18.9	18.3	17.3	15.0	13.3	10.2	8.7	7.3	5.1	17.7	16.9	15.9	14.2	12.7	9.8	8.3	6.9	4.8
22.0	16.2	15.9	15.4	13.9	12.6	9.7	8.3	7.1	4.9	15.4	14.7	14.3	12.9	12.0	9.3	8.0	6.7	4.7
24.0	14.6	14.5	13.7	12.8	11.8	9.4	8.0	6.9	4.8	13.9	13.3	12.8	11.7	11.0	9.1	7.7	6.6	4.6
26.0	-	13.0	12.0	11.8	10.9	9.1	7.8	6.7	4.7	10.9	12.2	11.3	10.9	10.4	8.8	7.5	6.4	4.4
28.0	-	11.7	11.3	10.8	10.2	8.8	7.6	6.5	4.5	-	11.0	10.6	10.0	9.7	8.6	7.3	6.3	4.3
30.0	-	11.0	10.5	9.8	9.5	8.5	7.4	6.4	4.4	-	10.4	9.9	9.2	9.1	8.2	7.2	6.2	4.2
32.0	-	-	9.6	9.3	8.8	8.0	7.2	6.2	4.3	-	-	9.1	8.7	8.4	7.8	7.0	6.0	4.1
34.0	-	-	9.1	8.7	8.1	7.6	6.9	6.1	4.2	-	-	8.7	8.1	7.8	7.3	6.6	5.9	4.0
36.0	-	-	8.6	8.0	7.7	7.1	6.6	5.9	4.1	-	-	8.2	7.6	7.4	6.8	6.2	5.6	3.9
38.0	-	-	-	7.5	7.2	6.7	6.3	5.6	4.0	-	-	-	7.1	6.9	6.4	5.9	5.3	3.8
40.0	-	-	-	7.2	6.7	6.3	6.0	5.3	3.9	-	-	-	6.8	6.5	6.0	5.5	5.0	3.7
42.0	-	-	-	6.7	6.2	6.0	5.7	5.1	3.8	-	-	-	6.4	6.0	5.7	5.3	4.7	3.6
44.0	-	-	-	-	6.0	5.6	5.4	4.8	3.8	-	-	-	-	5.7	5.3	5.0	4.4	3.5
46.0	-	-	-	-	5.7	5.1	5.1	4.5	3.7	-	-	-	-	5.4	4.9	4.7	4.1	3.4
48.0	-	-	-	-	5.3	4.9	4.7	4.3	3.6	-	-	-	-	5.1	4.7	4.4	3.9	3.3
50.0	-	-	-	-	-	4.7	4.4	4.0	3.4	-	-	-	-	-	4.5	4.1	3.7	3.2
55.0	-	-	-	-	-	-	3.8	3.3	2.9	-	-	-	-	-	-	3.5	3.0	2.7
60.0	-	-	-	-	-	-	-	2.8	2.4	-	-	-	-	-	-	2.8	2.6	2.2
65.0	-	-	-	-	-	-	-	2.3	2.0	-	-	-	-	-	-	2.2	2.1	1.8
70.0	-	-	-	-	-	-	-	-	1.6	-	-	-	-	-	-	-	-	1.4
71.0	-	-	-	-	-	-	-	-	1.4	-	-	-	-	-	-	-	-	1.3



LIEBHERR LR 1160

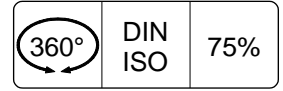
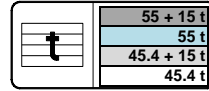
Lifting capacities
Capacités

160 TON

Tragfähigkeiten
Capacités



NDL-88°



	49.1 m									55.1 m								
	22.7 m	28.7 m	34.4 m	40.4 m	46.1 m	52.1 m	57.8 m	63.8 m	69.8 m	22.7 m	28.7 m	34.4 m	40.4 m	46.1 m	52.1 m	57.8 m	63.8 m	69.8 m
	t	t	t	t	t	t	t	t	t	t	t	t	t	t	t	t	t	t
8.0	9.2m	-	-	-	-	-	-	-	-	9.4m	-	-	-	-	-	-	-	-
9.0	30.7	-	-	-	-	-	-	-	-	26.4	-	-	-	-	-	-	-	-
10.0	30.5	-	-	-	-	-	-	-	-	26.4	-	-	-	-	-	-	-	-
12.0	27.7	24.5	20.4	-	-	-	-	-	-	24.2	21.5	18.4	-	-	-	-	-	-
14.0	24.1	22.3	19.9	14.9	-	-	-	-	-	21.5	19.7	17.8	14.4	-	-	-	-	-
16.0	21.1	19.8	18.3	14.6	12.7	10.1	-	-	-	18.9	17.6	16.3	13.8	11.7	9.4	-	-	-
18.0	18.5	17.4	16.4	14.2	12.3	9.7	8.3	6.6	-	16.8	15.9	14.7	13.0	11.3	9.1	7.7	6.1	-
20.0	16.4	15.5	14.8	13.3	11.9	9.3	7.9	6.5	4.5	15.0	14.4	13.2	12.0	10.8	8.7	7.5	6.0	4.2
22.0	14.5	13.7	13.4	12.0	11.3	8.9	7.6	6.4	4.4	13.4	12.7	12.1	10.9	10.1	8.4	7.2	5.9	4.1
24.0	13.0	12.4	12.1	10.8	10.3	8.5	7.4	6.2	4.3	12.1	11.5	11.0	10.0	9.3	8.0	7.0	5.8	4.0
26.0	11.9	11.4	10.8	10.1	9.5	8.2	7.1	6.1	4.2	11.2	10.7	9.9	9.4	8.5	7.6	6.7	5.6	3.9
28.0	-	10.3	10.1	9.3	8.9	7.9	6.9	5.9	4.1	-	9.7	9.3	8.7	8.1	7.1	6.4	5.5	3.9
30.0	-	9.9	9.4	8.6	8.4	7.6	6.6	5.8	4.0	-	9.3	8.7	8.0	7.6	6.9	6.0	5.3	3.8
32.0	-	7.1	8.7	8.1	7.8	7.2	6.4	5.6	3.9	-	8.6	8.1	7.6	7.1	6.5	5.7	5.1	3.7
34.0	-	-	8.3	7.6	7.2	6.8	6.0	5.5	3.8	-	-	7.7	7.2	6.6	6.1	5.5	4.9	3.6
36.0	-	-	7.8	7.1	6.8	6.3	5.7	5.2	3.7	-	-	7.3	6.7	6.3	5.7	5.2	4.6	3.5
38.0	-	-	-	6.6	6.4	5.9	5.4	4.9	3.6	-	-	-	6.2	5.9	5.3	4.9	4.4	3.4
40.0	-	-	-	6.4	6.0	5.6	5.1	4.6	3.5	-	-	-	6.0	5.6	5.1	4.6	4.1	3.3
42.0	-	-	-	6.0	5.6	5.3	4.8	4.3	3.4	-	-	-	5.7	5.2	4.8	4.3	3.8	3.1
44.0	-	-	-	-	5.4	5.0	4.6	4.0	3.2	-	-	-	-	4.9	4.5	4.1	3.6	2.9
46.0	-	-	-	-	5.1	4.6	4.3	3.7	3.1	-	-	-	-	4.7	4.2	3.9	3.3	2.8
48.0	-	-	-	-	4.8	4.3	4.1	3.5	3.0	-	-	-	-	4.5	3.9	3.7	3.1	2.6
50.0	-	-	-	-	-	4.2	3.8	3.3	2.8	-	-	-	-	-	3.8	3.4	3.0	2.4
55.0	-	-	-	-	-	-	3.3	2.8	2.4	-	-	-	-	-	-	2.9	2.5	2.0
60.0	-	-	-	-	-	-	2.6	2.4	1.9	-	-	-	-	-	-	2.5	2.1	1.6
65.0	-	-	-	-	-	-	-	2.0	1.6	-	-	-	-	-	-	-	1.7	1.3
70.0	-	-	-	-	-	-	-	-	1.2	-	-	-	-	-	-	-	-	1.1
71.0	-	-	-	-	-	-	-	-	1.1	-	-	-	-	-	-	-	-	69m

	60.8 m			61.1 m		
	22.7m	28.7m	34.4m	22.7m	28.7m	34.4m
	t	t	t	t	t	t
9.6	22.9	-	-	22.7	-	-
10.0	22.9	-	-	22.7	-	-
12.0	21.1	18.8	-	20.9	18.6	-
14.0	18.9	17.3	15.6	18.8	17.2	15.4
16.0	16.9	15.6	14.5	16.8	15.5	14.3
18.0	15.2	14.0	13.6	15.1	14.0	13.0
20.0	13.8	12.7	12.3	13.5	12.6	11.8
22.0	12.4	11.5	11.1	12.2	11.4	10.6
24.0	11.2	10.5	10.2	11.0	10.3	9.8
26.0	10.4	9.8	9.3	10.3	9.6	8.9
28.0	-	9.0	8.6	-	8.8	8.3
30.0	-	8.5	8.1	-	8.4	7.8
32.0	-	8.0	7.6	-	7.9	7.3
34.0	-	-	7.2	-	-	6.9
36.0	-	-	6.9	-	-	6.6
38.0	-	-	4.3	-	-	4.5



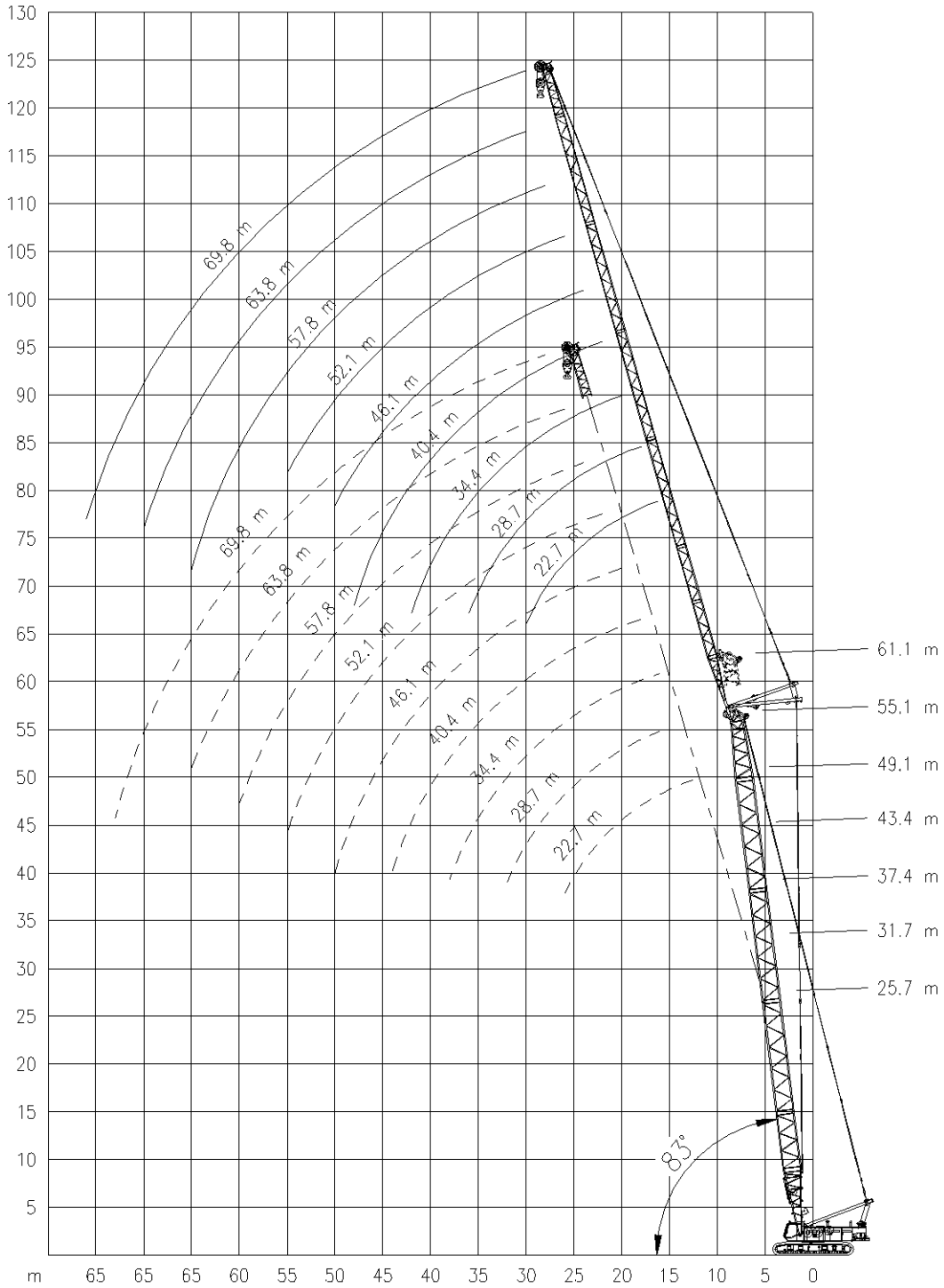
LIEBHERR LR 1160

Working ranges
Portées

160 TON

Arbeitsbereiche
Werkbereich

NDL-83°





LIEBHERR LR 1160

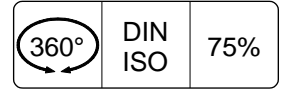
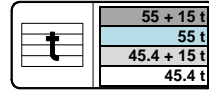
Lifting capacities
Capacités

160 TON

Tragfähigkeiten
Capacités



NDL-83°



	25.7 m									31.7 m								
	22.7 m	28.7 m	34.4 m	40.4 m	46.1 m	52.1 m	57.8 m	63.8 m	69.8 m	22.7 m	28.7 m	34.4 m	40.4 m	46.1 m	52.1 m	57.8 m	63.8 m	69.8 m
	t	t	t	t	t	t	t	t	t	t	t	t	t	t	t	t	t	t
10.0	12.6m	-	-	-	-	-	-	-	-	13.3m	-	-	-	-	-	-	-	-
12.0	45.4	-	-	-	-	-	-	-	-	42.0	-	-	-	-	-	-	-	-
14.0	44.1	-	-	-	-	-	-	-	-	41.6	-	-	-	-	-	-	-	-
16.0	39.0	32.9	25.9	-	-	-	-	-	-	37.2	31.5	-	-	-	-	-	-	-
18.0	34.1	30.3	24.7	17.8	-	-	-	-	-	32.9	29.3	23.8	-	-	-	-	-	-
20.0	27.6	27.5	23.1	17.1	14.8	-	-	-	-	27.3	27.0	22.4	16.7	-	-	-	-	-
22.0	23.7	23.8	21.5	16.3	14.2	10.7	-	-	-	23.1	23.7	21.0	15.9	13.9	10.3	-	-	-
24.0	19.4	20.6	19.8	15.6	13.7	10.3	8.8	-	-	19.7	19.9	19.4	15.3	13.3	10.1	8.5	-	-
26.0	17.7	18.6	18.1	15.1	13.4	9.9	8.5	7.5	-	17.6	18.1	17.7	14.7	13.0	9.7	8.3	7.3	-
28.0	-	16.4	16.5	14.7	13.0	9.6	8.3	7.2	5.1	15.7	16.3	15.9	14.2	12.7	9.5	8.1	7.1	5.0
30.0	-	14.7	15.1	14.3	12.7	9.4	8.1	7.0	4.9	-	14.4	14.7	13.8	12.4	9.2	7.9	6.9	4.8
32.0	-	13.4	13.7	13.6	12.4	9.2	7.9	6.8	4.8	-	13.4	13.4	13.3	12.1	9.0	7.8	6.7	4.7
34.0	-	-	12.3	12.6	12.1	9.0	7.7	6.7	4.6	-	12.0	12.1	12.4	11.8	8.8	7.6	6.6	4.6
36.0	-	-	11.5	11.5	11.5	8.7	7.6	6.5	4.5	-	-	11.3	11.4	11.4	8.6	7.4	6.4	4.5
38.0	-	-	10.5	10.4	10.7	8.5	7.4	6.3	4.4	-	-	10.5	10.4	10.6	8.4	7.3	6.3	4.3
40.0	-	-	-	9.8	9.9	8.3	7.3	6.2	4.3	-	-	-	9.5	9.8	8.1	7.1	6.1	4.2
42.0	-	-	-	9.2	9.0	8.0	7.1	6.1	4.2	-	-	-	9.0	9.0	7.8	7.0	6.0	4.1
44.0	-	-	-	8.4	8.4	7.7	6.9	5.9	4.1	-	-	-	8.4	8.1	7.5	6.8	5.9	4.0
46.0	-	-	-	-	7.9	7.4	6.7	5.8	4.0	-	-	-	-	7.7	7.2	6.5	5.7	3.9
48.0	-	-	-	-	7.3	7.1	6.5	5.7	3.9	-	-	-	-	7.2	6.8	6.3	5.6	3.8
50.0	-	-	-	-	6.6	6.7	6.3	5.6	3.8	-	-	-	-	6.7	6.5	6.0	5.5	3.8
55.0	-	-	-	-	-	5.5	5.7	5.3	3.6	-	-	-	-	-	5.5	5.4	5.1	3.6
60.0	-	-	-	-	-	-	4.6	4.7	3.5	-	-	-	-	-	-	4.5	4.6	3.4
65.0	-	-	-	-	-	-	-	3.9	3.2	-	-	-	-	-	-	-	3.8	3.2
70.0	-	-	-	-	-	-	-	-	2.8	-	-	-	-	-	-	-	-	2.7
71.0	-	-	-	-	-	-	-	-	2.7	-	-	-	-	-	-	-	-	2.6
72.0	-	-	-	-	-	-	-	-	2.5	-	-	-	-	-	-	-	-	2.5
73.0	-	-	-	-	-	-	-	-	2.4	-	-	-	-	-	-	-	-	2.4
74.0	-	-	-	-	-	-	-	-	-	-	-	-	-	-	-	-	-	2.2

	37.4 m									43.4 m								
	22.7 m	28.7 m	34.4 m	40.4 m	46.1 m	52.1 m	57.8 m	63.8 m	69.8 m	22.7 m	28.7 m	34.4 m	40.4 m	46.1 m	52.1 m	57.8 m	63.8 m	69.8 m
	t	t	t	t	t	t	t	t	t	t	t	t	t	t	t	t	t	t
12.0	-	-	-	-	-	-	-	-	-	14.8m	-	-	-	-	-	-	-	-
14.0	37.7	-	-	-	-	-	-	-	-	32.6	-	-	-	-	-	-	-	-
16.0	35.5	29.3	-	-	-	-	-	-	-	31.6	-	-	-	-	-	-	-	-
18.0	30.7	27.8	22.6	-	-	-	-	-	-	28.2	25.4	-	-	-	-	-	-	-
20.0	26.2	25.3	21.5	16.2	-	-	-	-	-	24.5	23.4	20.2	15.2	-	-	-	-	-
22.0	22.8	22.5	20.3	15.4	13.4	-	-	-	-	21.3	20.7	19.0	14.8	12.7	-	-	-	-
24.0	20.0	19.8	18.9	14.8	12.9	9.8	-	-	-	19.2	18.5	17.5	14.2	12.4	9.4	-	-	-
26.0	17.2	17.4	17.2	14.3	12.6	9.5	8.1	7.1	-	16.7	16.0	16.1	13.7	12.0	9.1	7.8	-	-
28.0	15.7	15.9	15.5	13.7	12.3	9.2	7.9	7.0	4.8	15.3	14.8	14.6	13.2	11.7	8.9	7.6	6.8	-
30.0	-	14.2	14.1	13.1	11.9	9.0	7.7	6.8	4.7	-	13.5	13.2	12.4	11.4	8.7	7.5	6.6	4.6
32.0	-	13.1	13.0	12.5	11.5	8.8	7.6	6.6	4.6	-	12.4	12.3	11.7	10.9	8.5	7.3	6.4	4.5
34.0	-	12.1	11.9	11.7	11.1	8.6	7.4	6.5	4.5	-	11.6	11.4	11.0	10.4	8.4	7.2	6.3	4.4
36.0	-	-	11.0	10.9	10.6	8.4	7.3	6.3	4.4	-	-	10.4	10.3	9.8	8.2	7.0	6.1	4.3
38.0	-	-	10.3	10.1	10.0	8.2	7.1	6.1	4.3	-	-	9.9	9.6	9.3	8.0	6.9	6.0	4.2
40.0	-	-	9.5	9.1	9.4	8.0	7.0	6.0	4.1	-	-	9.2	8.8	8.7	7.8	6.7	5.9	4.1
42.0	-	-	-	8.7	8.6	7.7	6.8	5.9	4.1	-	-	-	8.2	8.2	7.5	6.6	5.7	4.0
44.0	-	-	-	8.1	7.9	7.3	6.6	5.8	4.0	-	-	-	7.8	7.5	7.1	6.4	5.6	3.9
46.0	-	-	-	7.4	7.4	7.0	6.4	5.6	3.9	-	-	-	7.3	7.0	6.7	6.2	5.5	3.8
48.0	-	-	-	-	7.0	6.6	6.1	5.5	3.8	-	-	-	-	6.6	6.3	5.9	5.3	3.7
50.0	-	-	-	-	6.5	6.2	5.8	5.3	3.7	-	-	-	-	6.3	5.8	5.6	5.1	3.6
55.0	-	-	-	-	-	5.4	5.1	4.8	3.5	-	-	-	-	-	5.1	4.7	4.6	3.5
60.0	-	-	-	-	-	-	4.4	4.3	3.4	-	-	-	-	-	-	4.2	4.0	3.3
65.0	-	-	-	-	-	-	-	3.6	3.1	-	-	-	-	-	-	-	3.4	3.1
70.0	-	-	-	-	-	-	-	-	2.7	-	-	-	-	-	-	-	-	2.6
75.0	-	-	-	-	-	-	-	-	2.2	-	-	-	-	-	-	-	-	2.0
80.0	-	-	-	-	-	-	-	-	74.0m	-	-	-	-	-	-	-	-	-



LIEBHERR LR 1160

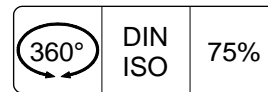
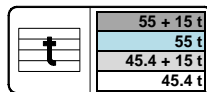
Lifting capacities
Capacités

160 TON

Tragfähigkeiten
Capacités



NDL-83°



	49.1 m									55.1 m								
	22.7 m	28.7 m	34.4 m	40.4 m	46.1 m	52.1 m	57.8 m	63.8 m	69.8 m	22.7 m	28.7 m	34.4 m	40.4 m	46.1 m	52.1 m	57.8 m	63.8 m	69.8 m
	t	t	t	t	t	t	t	t	t	t	t	t	t	t	t	t	t	t
12.0	15.5m	-	-	-	-	-	-	-	-	-	-	-	-	-	-	-	-	-
14.0	27.7	-	-	-	-	-	-	-	-	16.2m	-	-	-	-	-	-	-	-
16.0	27.5	-	-	-	-	-	-	-	-	22.9	-	-	-	-	-	-	-	-
18.0	25.0	22.5	-	-	-	-	-	-	-	21.6	19.0	-	-	-	-	-	-	-
20.0	22.5	20.9	18.7	-	-	-	-	-	-	19.8	18.0	16.0	-	-	-	-	-	-
22.0	20.3	18.9	17.6	14.0	-	-	-	-	-	17.9	16.7	15.2	12.9	-	-	-	-	-
24.0	17.9	17.1	16.1	13.4	11.6	-	-	-	-	15.9	15.4	14.3	12.4	10.7	-	-	-	-
26.0	14.4	15.3	14.8	13.0	11.4	8.8	7.4	-	-	14.6	14.0	13.4	11.9	10.4	8.2	-	-	-
28.0	13.2	13.9	13.6	12.5	11.1	8.6	7.3	6.4	-	13.2	12.7	12.4	11.3	10.1	8.1	6.9	-	-
30.0	-	12.8	12.4	11.8	10.8	8.4	7.2	6.3	4.4	12.4	11.9	11.4	10.7	9.8	7.9	6.8	5.9	4.1
32.0	-	11.7	11.5	11.0	10.4	8.2	7.0	6.2	4.3	-	11.0	10.6	10.0	9.4	7.7	6.6	5.8	4.0
34.0	-	11.1	10.7	10.1	9.8	8.0	6.9	6.0	4.2	-	10.3	9.9	9.3	8.8	7.5	6.5	5.6	3.9
36.0	-	10.2	9.9	9.5	9.1	7.8	6.7	5.9	4.1	-	9.7	9.2	8.7	8.3	7.2	6.3	5.5	3.9
38.0	-	-	9.3	9.0	8.5	7.6	6.6	5.8	4.0	-	-	8.6	8.2	7.9	6.9	6.2	5.4	3.8
40.0	-	-	6.9	8.3	8.0	7.4	6.5	5.7	3.9	-	-	8.2	7.7	7.4	6.6	5.9	5.3	3.7
42.0	-	-	-	7.7	7.6	7.1	6.3	5.5	3.8	-	-	7.7	7.1	7.0	6.3	5.7	5.2	3.6
44.0	-	-	-	7.4	7.1	6.7	6.2	5.4	3.8	-	-	-	6.8	6.6	6.0	5.5	5.0	3.5
46.0	-	-	-	6.9	6.5	6.3	6.0	5.3	3.7	-	-	-	6.4	6.2	5.7	5.3	4.8	3.5
48.0	-	-	-	-	6.2	5.9	5.6	5.1	3.6	-	-	-	6.0	5.8	5.3	5.1	4.7	3.4
50.0	-	-	-	-	5.9	5.5	5.3	5.0	3.5	-	-	-	-	5.6	5.0	4.8	4.5	3.3
55.0	-	-	-	-	-	4.8	4.5	4.3	3.3	-	-	-	-	-	4.3	4.1	3.9	3.1
60.0	-	-	-	-	-	-	4.0	3.6	3.0	-	-	-	-	-	-	3.6	3.2	2.7
65.0	-	-	-	-	-	-	-	3.1	2.7	-	-	-	-	-	-	2.7	2.8	2.3
70.0	-	-	-	-	-	-	-	2.5	2.3	-	-	-	-	-	-	-	2.3	2.0
75.0	-	-	-	-	-	-	-	-	1.8	-	-	-	-	-	-	-	-	1.6
76.0	-	-	-	-	-	-	-	-	1.6	-	-	-	-	-	-	-	-	1.5

	60.8 m			61.1 m		
	22.7m	28.7m	34.4m	22.7m	28.7m	34.4m
	t	t	t	t	t	t
16.9	19.1	-	-	18.9	-	-
18.0	18.6	-	-	18.4	-	-
20.0	17.2	15.5	-	17.0	15.3	-
22.0	15.8	14.4	13.1	15.7	14.3	12.9
24.0	14.4	13.4	12.3	14.3	13.3	12.2
26.0	13.3	12.5	11.6	13.3	12.4	11.5
28.0	12.2	11.6	10.9	12.2	11.5	10.8
30.0	11.5	10.9	10.2	11.4	10.8	10.2
32.0	7.5	10.1	9.5	7.7	10.0	9.5
34.0	-	9.4	9.0	-	9.3	8.9
36.0	-	8.9	8.5	-	8.9	8.4
38.0	-	-	7.8	-	-	7.8
40.0	-	-	7.5	-	-	7.4
42.0	-	-	7.1	-	-	7.0
43.0	-	-	6.8	-	-	6.8



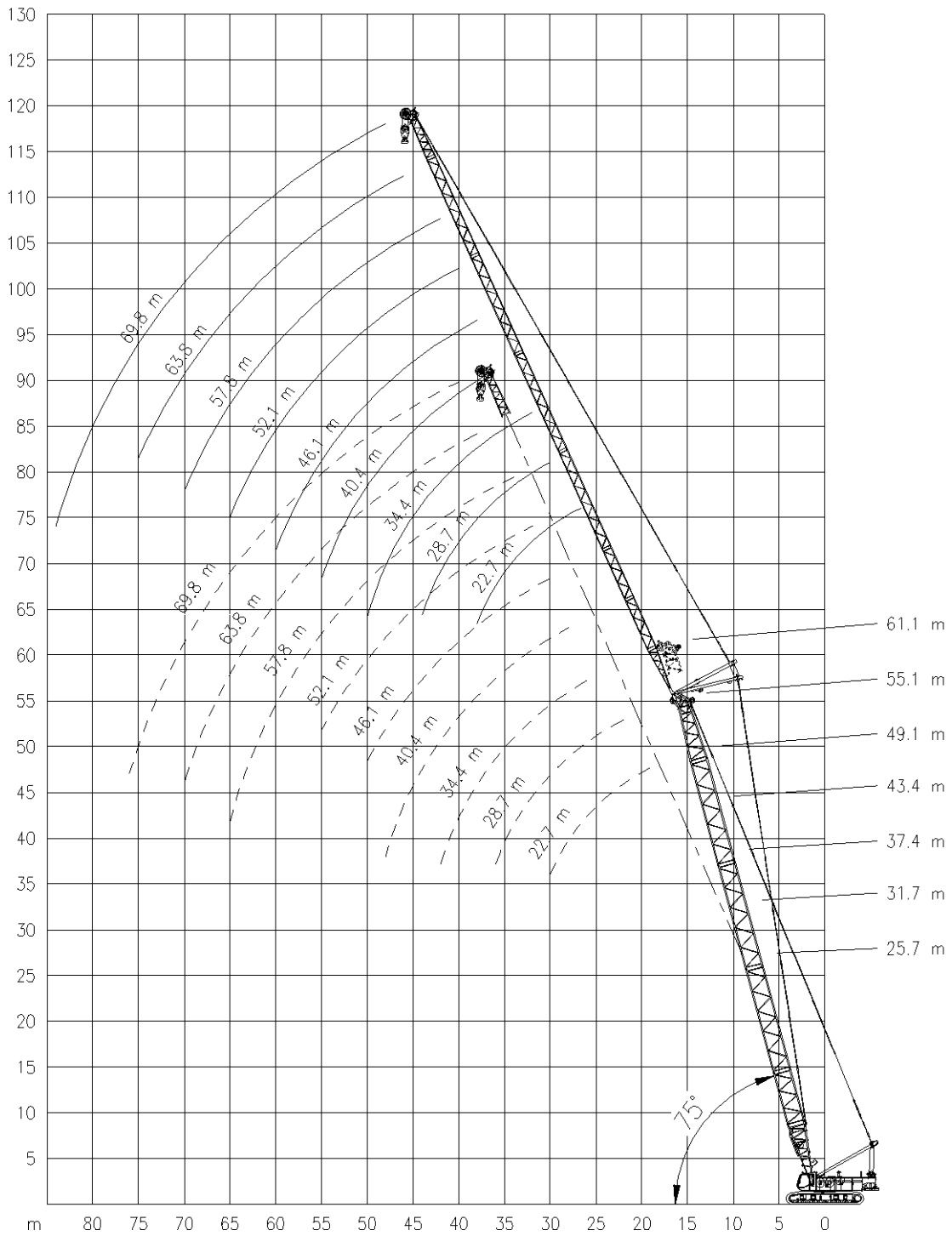
LIEBHERR LR 1160

Working ranges
Portées

160 TON

Arbeitsbereiche
Werkbereich

NDL-75°





LIEBHERR LR 1160

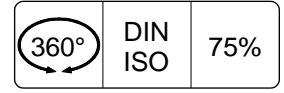
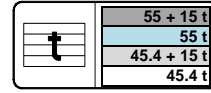
Lifting capacities
Capacités

160 TON

Tragfähigkeiten
Capacités



NDL-75°



m	25.7 m									31.7 m								
	22.7 m	28.7 m	34.4 m	40.4 m	46.1 m	52.1 m	57.8 m	63.8 m	69.8 m	22.7 m	28.7 m	34.4 m	40.4 m	46.1 m	52.1 m	57.8 m	63.8 m	69.8 m
t	t	t	t	t	t	t	t	t	t	t	t	t	t	t	t	t	t	
18.0	19.1m	-	-	-	-	-	-	-	20.7m	-	-	-	-	-	-	-	-	
20.0	31.1	-	-	-	-	-	-	-	27.2	-	-	-	-	-	-	-	-	
22.0	29.8	-	-	-	-	-	-	-	25.6	-	-	-	-	-	-	-	-	
24.0	27.1	26.1	-	-	-	-	-	-	23.5	22.7	-	-	-	-	-	-	-	
26.0	24.8	24.0	-	-	-	-	-	-	21.8	21.0	20.3	-	-	-	-	-	-	
28.0	22.5	22.2	21.0	-	-	-	-	-	20.1	19.5	18.8	-	-	-	-	-	-	
30.0	20.6	20.4	19.9	15.3	-	-	-	-	18.5	18.2	17.6	14.7	-	-	-	-	-	
32.0	18.9	18.7	18.5	14.9	13.1	-	-	-	17.0	16.9	16.5	14.4	12.6	-	-	-	-	
34.0	-	17.3	17.1	14.6	12.9	9.4	-	-	-	15.6	15.5	14.1	12.4	9.1	-	-	-	
36.0	-	16.0	15.9	14.3	12.6	9.2	7.9	-	-	14.6	14.4	13.8	12.2	8.9	7.6	-	-	
38.0	-	14.9	14.6	13.8	12.4	9.0	7.8	-	-	13.6	13.4	13.2	12.0	8.7	7.5	6.4	-	
40.0	-	-	13.4	12.9	12.1	8.8	7.6	6.6	-	-	12.6	12.4	11.8	8.6	7.4	6.4	-	
42.0	-	-	12.7	12.0	11.6	8.7	7.5	6.4	4.5	-	-	11.8	11.6	11.4	8.4	7.2	6.2	4.3
44.0	-	-	11.7	11.0	11.0	8.5	7.3	6.2	4.3	-	-	10.4	10.9	10.7	8.3	7.1	6.1	4.2
46.0	-	-	-	10.5	10.2	8.3	7.2	6.1	4.2	-	-	-	10.3	10.0	8.1	7.0	6.0	4.1
48.0	-	-	-	10.0	9.5	8.1	7.1	6.0	4.1	-	-	-	9.8	9.3	8.0	6.9	5.8	4.0
50.0	-	-	-	9.2	8.9	7.9	6.9	5.9	4.0	-	-	-	9.0	8.9	7.8	6.8	5.7	3.9
55.0	-	-	-	-	8.5	7.7	6.8	5.8	3.9	-	-	-	-	7.7	7.3	6.5	5.5	3.7
60.0	-	-	-	-	-	7.1	6.4	5.5	3.7	-	-	-	-	-	6.5	6.1	5.3	3.6
65.0	-	-	-	-	-	-	5.9	5.3	3.6	-	-	-	-	-	-	5.4	5.0	3.4
70.0	-	-	-	-	-	-	5.1	4.9	3.4	-	-	-	-	-	-	-	4.5	3.3
75.0	-	-	-	-	-	-	-	4.3	3.3	-	-	-	-	-	-	-	-	3.2
76.0	-	-	-	-	-	-	-	-	3.2	-	-	-	-	-	-	-	-	3.2
77.0	-	-	-	-	-	-	-	-	3.1	-	-	-	-	-	-	-	-	3.2
78.0	-	-	-	-	-	-	-	-	-	-	-	-	-	-	-	-	-	3.1

m	37.4 m									43.4 m								
	22.7 m	28.7 m	34.4 m	40.4 m	46.1 m	52.1 m	57.8 m	63.8 m	69.8 m	22.7 m	28.7 m	34.4 m	40.4 m	46.1 m	52.1 m	57.8 m	63.8 m	69.8 m
t	t	t	t	t	t	t	t	t	t	t	t	t	t	t	t	t	t	
20.0	22.2m	-	-	-	-	-	-	-	23.7m	-	-	-	-	-	-	-	-	
22.0	24.0	-	-	-	-	-	-	-	21.1	-	-	-	-	-	-	-	-	
24.0	22.2	-	-	-	-	-	-	-	20.9	-	-	-	-	-	-	-	-	
26.0	20.6	19.8	-	-	-	-	-	-	19.3	-	-	-	-	-	-	-	-	
28.0	19.1	18.4	17.8	-	-	-	-	-	18.0	17.3	-	-	-	-	-	-	-	
30.0	17.9	17.2	16.6	14.3	-	-	-	-	16.8	16.1	15.6	-	-	-	-	-	-	
32.0	16.6	16.1	15.6	14.1	12.2	-	-	-	15.8	15.1	14.6	13.6	-	-	-	-	-	
34.0	15.4	15.2	14.6	13.8	12.1	-	-	-	14.9	14.2	13.7	13.1	11.5	-	-	-	-	
36.0	-	14.2	13.8	13.2	11.9	8.8	-	-	12.1	13.4	12.9	12.4	11.4	-	-	-	-	
38.0	-	13.3	13.0	12.5	11.7	8.6	7.4	-	-	12.7	12.2	11.7	11.2	8.4	-	-	-	
40.0	-	12.0	12.2	11.8	11.4	8.5	7.3	6.2	-	12.0	11.6	11.1	10.6	8.3	7.0	-	-	
42.0	-	-	11.5	11.2	10.8	8.3	7.1	6.1	-	-	11.0	10.5	10.0	8.1	6.9	6.0	-	
44.0	-	-	10.8	10.6	10.2	8.2	7.0	6.0	4.2	-	-	10.5	10.0	9.5	8.0	6.8	5.9	4.1
46.0	-	-	-	10.0	9.7	8.0	6.9	5.9	4.1	-	-	9.9	9.5	9.1	7.9	6.7	5.8	4.0
48.0	-	-	-	9.5	9.3	7.9	6.8	5.8	4.0	-	-	9.1	8.6	7.7	6.6	5.7	3.9	-
50.0	-	-	-	9.0	8.8	7.8	6.7	5.7	3.9	-	-	8.6	8.2	7.6	6.5	5.6	3.8	-
55.0	-	-	-	-	7.7	7.4	6.5	5.4	3.7	-	-	-	7.4	6.9	6.3	5.4	3.7	-
60.0	-	-	-	-	-	6.5	6.2	5.3	3.6	-	-	-	-	6.2	5.8	5.2	3.5	-
65.0	-	-	-	-	-	-	5.6	5.0	3.4	-	-	-	-	-	5.2	4.8	3.4	-
70.0	-	-	-	-	-	-	-	4.6	3.3	-	-	-	-	-	-	4.3	3.3	-
75.0	-	-	-	-	-	-	-	-	3.2	-	-	-	-	-	-	-	3.9	3.2
80.0	-	-	-	-	-	-	-	-	3.1	-	-	-	-	-	-	-	-	3.1
81.0	-	-	-	-	-	-	-	-	79.0m	-	-	-	-	-	-	-	-	3.0



LIEBHERR LR 1160

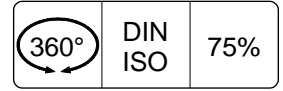
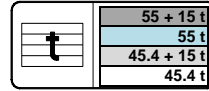
Lifting capacities
Capacités

160 TON

Tragfähigkeiten
Capacités



NDL-75°



	49.1 m										55.1 m								
	22.7 m	28.7 m	34.4 m	40.4 m	46.1 m	52.1 m	57.8 m	63.8 m	69.8 m		22.7 m	28.7 m	34.4 m	40.4 m	46.1 m	52.1 m	57.8 m	63.8 m	69.8 m
	t	t	t	t	t	t	t	t	t	t	t	t	t	t	t	t	t	t	t
22.0	25.2m	-	-	-	-	-	-	-	-	-	-	-	-	-	-	-	-	-	-
24.0	18.7	-	-	-	-	-	-	-	-	-	-	-	-	-	-	-	-	-	-
26.0	18.1	-	-	-	-	-	-	-	-	-	16.4	-	-	-	-	-	-	-	-
28.0	16.9	16.2	-	-	-	-	-	-	-	-	15.7	-	-	-	-	-	-	-	-
30.0	15.8	15.1	-	-	-	-	-	-	-	-	14.6	14.0	-	-	-	-	-	-	-
32.0	14.8	14.2	13.6	-	-	-	-	-	-	-	13.7	13.1	12.6	-	-	-	-	-	-
34.0	13.9	13.3	12.8	12.3	-	-	-	-	-	-	12.9	12.4	11.8	-	-	-	-	-	-
36.0	13.2	12.6	12.1	11.5	10.7	-	-	-	-	-	12.2	11.7	11.2	10.3	-	-	-	-	-
38.0	-	11.9	11.4	10.9	10.4	8.0	-	-	-	-	11.6	11.0	10.5	9.9	8.9	-	-	-	-
40.0	-	11.3	10.8	10.3	9.9	7.9	6.7	-	-	-	-	10.4	10.0	9.5	8.7	7.4	-	-	-
42.0	-	10.8	10.3	9.8	9.3	7.8	6.7	-	-	-	-	9.9	9.5	9.0	8.4	7.3	6.1	-	-
44.0	-	-	9.8	9.3	8.9	7.7	6.6	5.7	-	-	-	9.5	9.0	8.5	8.1	7.1	6.1	-	-
46.0	-	-	9.3	8.8	8.4	7.6	6.5	5.6	3.9	-	-	-	8.6	8.1	7.7	6.9	6.0	5.3	-
48.0	-	-	8.9	8.4	8.0	7.5	6.4	5.5	3.8	-	-	-	8.2	7.7	7.3	6.8	5.9	5.2	3.6
50.0	-	-	-	8.0	7.6	7.2	6.3	5.4	3.8	-	-	-	7.8	7.4	7.0	6.5	5.8	5.1	3.6
55.0	-	-	-	-	6.8	6.4	6.0	5.2	3.6	-	-	-	6.6	6.2	5.8	5.4	4.9	4.9	3.4
60.0	-	-	-	-	5.3	5.7	5.3	4.9	3.4	-	-	-	-	5.6	5.1	4.8	4.8	4.4	3.3
65.0	-	-	-	-	-	5.1	4.8	4.4	3.3	-	-	-	-	-	4.6	4.2	3.9	3.9	3.2
70.0	-	-	-	-	-	-	4.3	3.9	3.2	-	-	-	-	-	-	3.8	3.4	3.0	3.0
75.0	-	-	-	-	-	-	-	3.5	3.1	-	-	-	-	-	-	-	3.0	2.6	2.6
80.0	-	-	-	-	-	-	-	-	2.7	-	-	-	-	-	-	-	-	-	2.3
81.0	-	-	-	-	-	-	-	-	2.7	-	-	-	-	-	-	-	-	-	2.2
82.0	-	-	-	-	-	-	-	-	2.6	-	-	-	-	-	-	-	-	-	2.2
83.0	-	-	-	-	-	-	-	-	-	-	-	-	-	-	-	-	-	-	2.1
84.0	-	-	-	-	-	-	-	-	-	-	-	-	-	-	-	-	-	-	2.1

	60.8 m			61.1 m		
	22.7m	28.7m	34.4m	22.7m	28.7m	34.4m
	t	t	t	t	t	t
26.0	28.2m	-	-	28.3m	-	-
28.0	13.7	-	-	13.5	-	-
30.0	13.2	-	-	13.0	-	-
32.0	12.6	11.5	-	12.4	11.3	-
34.0	12.0	11.0	10.1	11.8	10.8	9.9
36.0	11.3	10.5	9.7	11.2	10.4	9.5
38.0	10.7	10.1	9.3	10.6	9.9	9.2
40.0	10.2	9.6	8.9	10.1	9.5	8.8
42.0	-	9.2	8.6	-	9.1	8.4
44.0	-	8.7	8.2	-	8.7	8.1
46.0	-	6.8	7.9	-	8.3	7.8
48.0	-	-	7.5	-	-	7.5
50.0	-	-	7.2	-	-	7.1
51.0	-	-	7.0	-	-	7.0



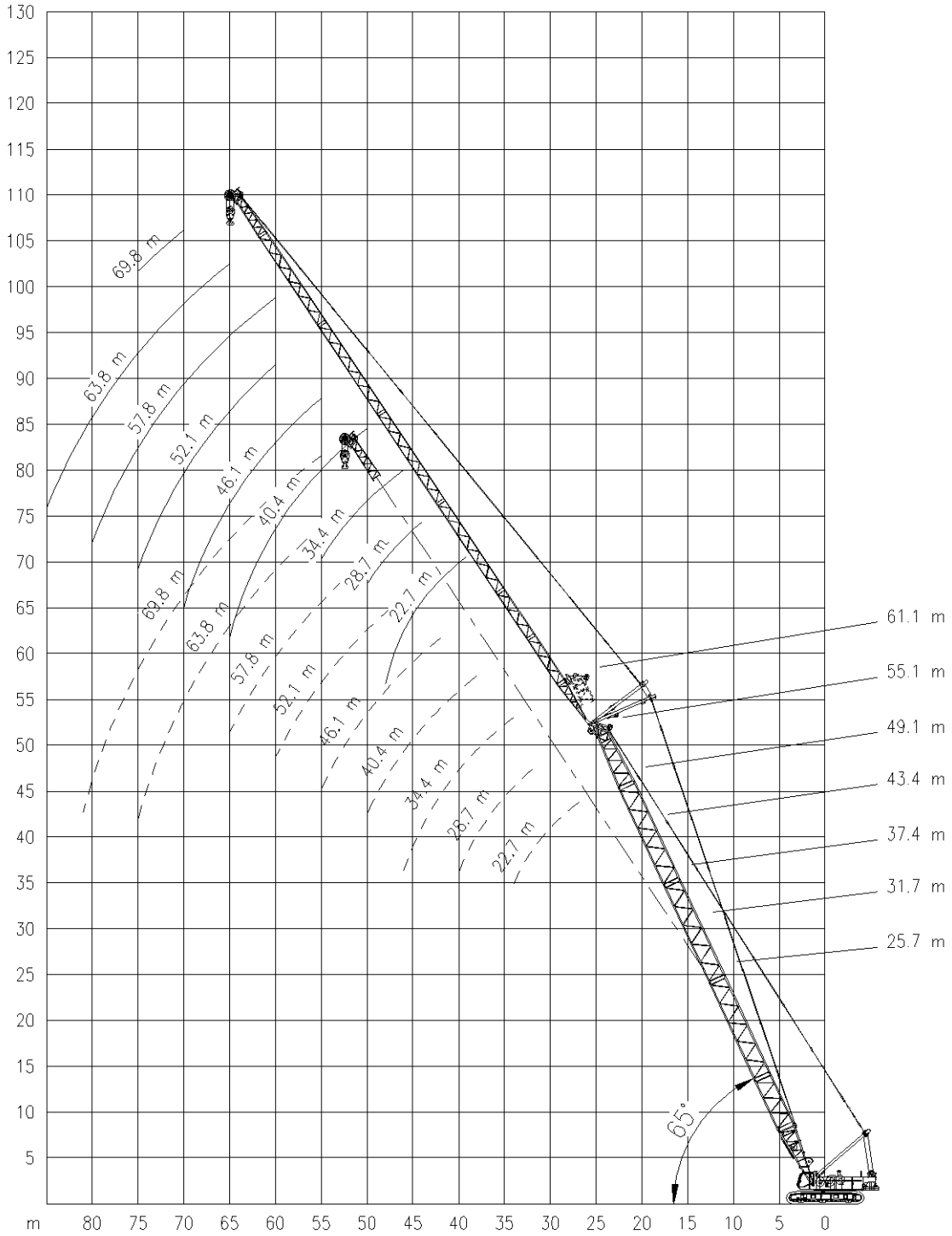
LIEBHERR LR 1160

Working ranges
Portées

160 TON

Arbeitsbereiche
Werkbereich

NDL-65°





LIEBHERR LR 1160

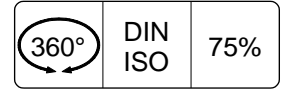
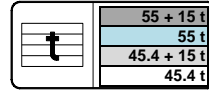
Lifting capacities
Capacités

160 TON

Tragfähigkeiten
Capacités



NDL-65°



	25.7 m										31.7 m								
	22.7	28.7	34.4	40.4	46.1	52.1	57.8	63.8	69.8		22.7	28.7	34.4	40.4	46.1	52.1	57.8	63.8	69.8
	m	m	m	m	m	m	m	m	m	m	m	m	m	m	m	m	m	m	m
	t	t	t	t	t	t	t	t	t	t	t	t	t	t	t	t	t	t	t
26.8	20.4	-	-	-	-	-	-	-	-	-	-	-	-	-	-	-	-	-	-
28.0	19.3	-	-	-	-	-	-	-	-	-	-	-	-	-	-	-	-	-	-
30.0	17.8	-	-	-	-	-	-	-	-	-	17.0	-	-	-	-	-	-	-	-
32.0	16.4	16.2	-	-	-	-	-	-	-	-	15.7	-	-	-	-	-	-	-	-
34.0	15.2	15.0	14.8	-	-	-	-	-	-	-	14.6	14.3	-	-	-	-	-	-	-
36.0	-	14.0	13.8	-	-	-	-	-	-	-	13.6	13.3	13.1	-	-	-	-	-	-
38.0	-	13.1	12.9	12.6	-	-	-	-	-	-	12.1	12.4	12.2	-	-	-	-	-	-
40.0	-	12.2	12.1	11.8	-	-	-	-	-	-	-	11.7	11.5	11.2	-	-	-	-	-
42.0	-	-	11.3	11.1	10.9	-	-	-	-	-	-	11.0	10.8	10.5	-	-	-	-	-
44.0	-	-	10.7	10.4	10.2	8.5	-	-	-	-	-	10.3	10.1	9.9	9.7	-	-	-	-
46.0	-	-	10.1	9.9	9.6	8.3	-	-	-	-	-	-	9.6	9.3	9.1	-	-	-	-
48.0	-	-	-	9.3	9.1	8.2	7.0	-	-	-	-	-	9.0	8.8	8.6	8.2	-	-	-
50.0	-	-	-	8.8	8.6	8.1	6.9	-	-	-	-	-	-	8.3	8.1	7.8	6.8	-	-
55.0	-	-	-	-	7.5	7.3	6.7	5.6	3.8	-	-	-	-	7.3	7.1	6.8	6.6	5.6	-
60.0	-	-	-	-	-	6.4	6.2	5.4	3.6	-	-	-	-	-	6.2	6.0	5.8	5.4	3.6
65.0	-	-	-	-	-	-	5.5	5.2	3.5	-	-	-	-	-	-	5.3	5.1	4.8	3.5
70.0	-	-	-	-	-	-	-	4.6	3.4	-	-	-	-	-	-	-	4.5	4.2	3.4
75.0	-	-	-	-	-	-	-	4.0	3.3	-	-	-	-	-	-	-	-	3.7	3.3
80.0	-	-	-	-	-	-	-	-	3.2	-	-	-	-	-	-	-	-	-	3.0
81.0	-	-	-	-	-	-	-	-	2.9	-	-	-	-	-	-	-	-	-	2.9
82.0	-	-	-	-	-	-	-	-	-	-	-	-	-	-	-	-	-	-	2.8
83.0	-	-	-	-	-	-	-	-	-	-	-	-	-	-	-	-	-	-	2.8

	37.4 m										43.4 m								
	22.7	28.7	34.4	40.4	46.1	52.1	57.8	63.8	69.8		22.7	28.7	34.4	40.4	46.1	52.1	57.8	63.8	69.8
	m	m	m	m	m	m	m	m	m	m	m	m	m	m	m	m	m	m	m
	t	t	t	t	t	t	t	t	t	t	t	t	t	t	t	t	t	t	t
31.7	15.1	-	-	-	-	-	-	-	-	-	-	-	-	-	-	-	-	-	-
32.0	14.9	-	-	-	-	-	-	-	-	-	34.3m	-	-	-	-	-	-	-	-
34.0	13.9	-	-	-	-	-	-	-	-	-	12.7	-	-	-	-	-	-	-	-
36.0	12.9	12.6	-	-	-	-	-	-	-	-	12.0	-	-	-	-	-	-	-	-
38.0	12.1	11.8	-	-	-	-	-	-	-	-	11.4	10.8	-	-	-	-	-	-	-
40.0	11.3	11.1	10.8	-	-	-	-	-	-	-	10.7	10.2	-	-	-	-	-	-	-
42.0	-	10.4	10.2	9.8	-	-	-	-	-	-	10.0	9.7	9.3	-	-	-	-	-	-
44.0	-	9.8	9.6	9.3	-	-	-	-	-	-	-	9.2	8.8	-	-	-	-	-	-
46.0	-	9.2	9.0	8.8	8.4	-	-	-	-	-	-	8.7	8.4	7.9	-	-	-	-	-
48.0	-	-	8.5	8.3	8.0	-	-	-	-	-	-	8.2	8.0	7.5	7.1	-	-	-	-
50.0	-	-	8.1	7.8	7.6	7.1	-	-	-	-	-	-	7.5	7.1	6.7	-	-	-	-
55.0	-	-	-	6.8	6.6	6.3	5.9	-	-	-	-	-	-	6.3	6.0	5.5	5.1	-	-
60.0	-	-	-	-	5.8	5.6	5.2	4.8	3.6	-	-	-	-	5.5	5.3	4.9	4.5	4.1	-
65.0	-	-	-	-	-	4.9	4.7	4.3	3.5	-	-	-	-	-	4.7	4.4	4.0	3.6	3.2
70.0	-	-	-	-	-	-	4.1	3.8	3.4	-	-	-	-	-	-	3.9	3.5	3.2	2.8
75.0	-	-	-	-	-	-	-	3.4	3.0	-	-	-	-	-	-	-	3.1	2.8	2.4
80.0	-	-	-	-	-	-	-	2.9	2.6	-	-	-	-	-	-	-	-	2.4	2.1
85.0	-	-	-	-	-	-	-	-	2.3	-	-	-	-	-	-	-	-	-	1.8
86.0	-	-	-	-	-	-	-	-	2.2	-	-	-	-	-	-	-	-	-	1.7
87.0	-	-	-	-	-	-	-	-	-	-	-	-	-	-	-	-	-	-	1.6
88.0	-	-	-	-	-	-	-	-	-	-	-	-	-	-	-	-	-	-	1.6



LIEBHERR LR 1160

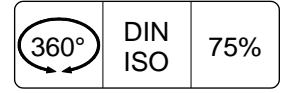
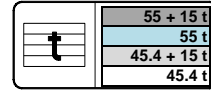
Lifting capacities
Capacités

160 TON

Tragfähigkeiten
Capacités



NDL-65°



	49.1 m									55.1 m								
	22.7 m	28.7 m	34.4 m	40.4 m	46.1 m	52.1 m	57.8 m	63.8 m	69.8 m	22.7 m	28.7 m	34.4 m	40.4 m	46.1 m	52.1 m	57.8 m	63.8 m	69.8 m
	t	t	t	t	t	t	t	t	t	t	t	t	t	t	t	t	t	t
34.0	36.7m	-	-	-	-	-	-	-	-	39.2m	-	-	-	-	-	-	-	-
36.0	10.7	-	-	-	-	-	-	-	-	8.8	-	-	-	-	-	-	-	-
38.0	10.3	-	-	-	-	-	-	-	-	8.6	-	-	-	-	-	-	-	-
40.0	9.7	-	-	-	-	-	-	-	-	8.2	-	-	-	-	-	-	-	-
42.0	9.2	8.7	-	-	-	-	-	-	-	7.7	7.3	-	-	-	-	-	-	-
44.0	8.8	8.3	7.9	-	-	-	-	-	-	7.4	6.9	6.5	-	-	-	-	-	-
46.0	-	7.9	7.5	-	-	-	-	-	-	7.0	6.6	6.2	-	-	-	-	-	-
48.0	-	7.5	7.1	6.6	-	-	-	-	-	-	6.2	5.8	5.4	-	-	-	-	-
50.0	-	7.2	6.8	6.3	-	-	-	-	-	-	5.2	4.7	4.4	-	-	-	-	-
55.0	-	-	6.0	5.6	5.2	4.8	-	-	-	-	-	4.2	3.8	3.4	3.1	-	-	-
60.0	-	-	-	5.0	4.6	4.2	3.8	-	-	-	-	3.7	3.4	3.0	2.6	2.2	-	-
65.0	-	-	-	-	4.1	3.7	3.4	3.0	2.6	-	-	-	3.0	2.6	2.3	1.9	1.6	1.2
70.0	-	-	-	-	-	3.3	2.9	2.6	2.2	-	-	-	-	2.3	1.9	1.6	1.2	1.5
75.0	-	-	-	-	-	-	2.6	2.2	1.8	-	-	-	-	-	-	-	-	-
80.0	-	-	-	-	-	-	-	1.9	1.5	-	-	-	-	-	-	1.6	1.3	-
85.0	-	-	-	-	-	-	-	1.6	1.2	-	-	-	-	-	-	-	1.0	-
86.0	-	-	-	-	-	-	-	-	1.2	-	-	-	-	-	-	-	-	-
87.0	-	-	-	-	-	-	-	-	1.1	-	-	-	-	-	-	-	-	-
88.0	-	-	-	-	-	-	-	-	1.1	-	-	-	-	-	-	-	-	-
89.0	-	-	-	-	-	-	-	-	1.0	-	-	-	-	-	-	-	-	-

	60.8 m			61.1 m		
	22.7m	28.7m	34.4m	22.7m	28.7m	34.4m
	t	t	t	t	t	t
38.0	41.6m	-	-	41.7m	-	-
40.0	7.2	-	-	7.1	-	-
42.0	7.1	-	-	7.0	-	-
44.0	6.8	-	-	6.7	-	-
46.0	6.4	5.9	-	6.3	5.9	-
48.0	6.1	5.6	-	6.0	5.6	-
50.0	5.8	5.4	5.0	5.7	5.3	4.9
55.0	-	4.7	4.4	-	4.7	4.3
60.0	-	-	3.9	-	-	3.8
61.0	-	-	3.8	-	-	3.7



LIEBHERR LR 1160

160 TON

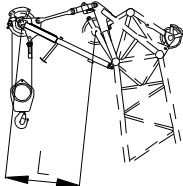
Working speeds Vitesses de travail

Arbeitsgeschwindigkeiten Werksnelheden

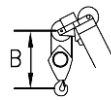
Mechanisms Mécanismes Antriebe Aandrijvingen	Speeds Vitesses Geschwindigkeiten Snelheden	Rope diameter Diamètre du câble Seildurchmesser Kabeldiameter	Single line pull Effort sur brin simple Zulässiger Seilzug je strang Toegelaten trekkracht / part	Length of ropes Longueur des cables Länge der Seile Kabellänge
Main hoist Levage sur flèche Hubwerk 1 Hijlslier 1	0 - 136 m/min	26 mm	120 kN	470 m
Auxiliary hoist Levage sur fléchette Hubwerk 2 Hijlslier 2	0 - 136 m/min	26 mm	120 kN	260 m
Boom hoist Relevage de flèche Einziehwerk Top lier	0 - 99 m/min	24 mm	150 kN	240 m
Luffing hoist Relevage de fléchette Wippwerk Toplier wipper	0 - 108 m/min	20 mm	105 kN	250 m
Slewing gear Orientation Drehwerk Zwenkwerk	0 - 3 RPM			
Travel speed Vitesse sur route Fahrgeschwindigkeit Rijsnelheid	0 - 1.5 km/h			

Runner Crochet rapide

Auslegerspitze Giekneus

	Capacity Capacité Tragfähigkeit Capaciteit	Max 24 t	L= 2006 mm
---	---	-----------------	-------------------

Hook Block / Crane hook Crochet mouflé / Crochet simple



Unterflasche / Hakengehänge Kraanblok / Kraanhaak

Capacity Capacité Tragfähigkeit Capaciteit	Number of sheaves Nombre de poulies Anzahl der Rollen Aantal schijven	Number of lines Nombre de brins Strangzahl Aantal parten	Weight Poids Gewicht Gewicht	"B"
SWL 140 t	7	15	2500 kg	3.0 m
SWL 80 t	3	7	2000 kg	3.0 m
SWL 40 t	1	3	1500 kg	2.7 m
SWL 12 t	-	1	600 kg	2.0 m