

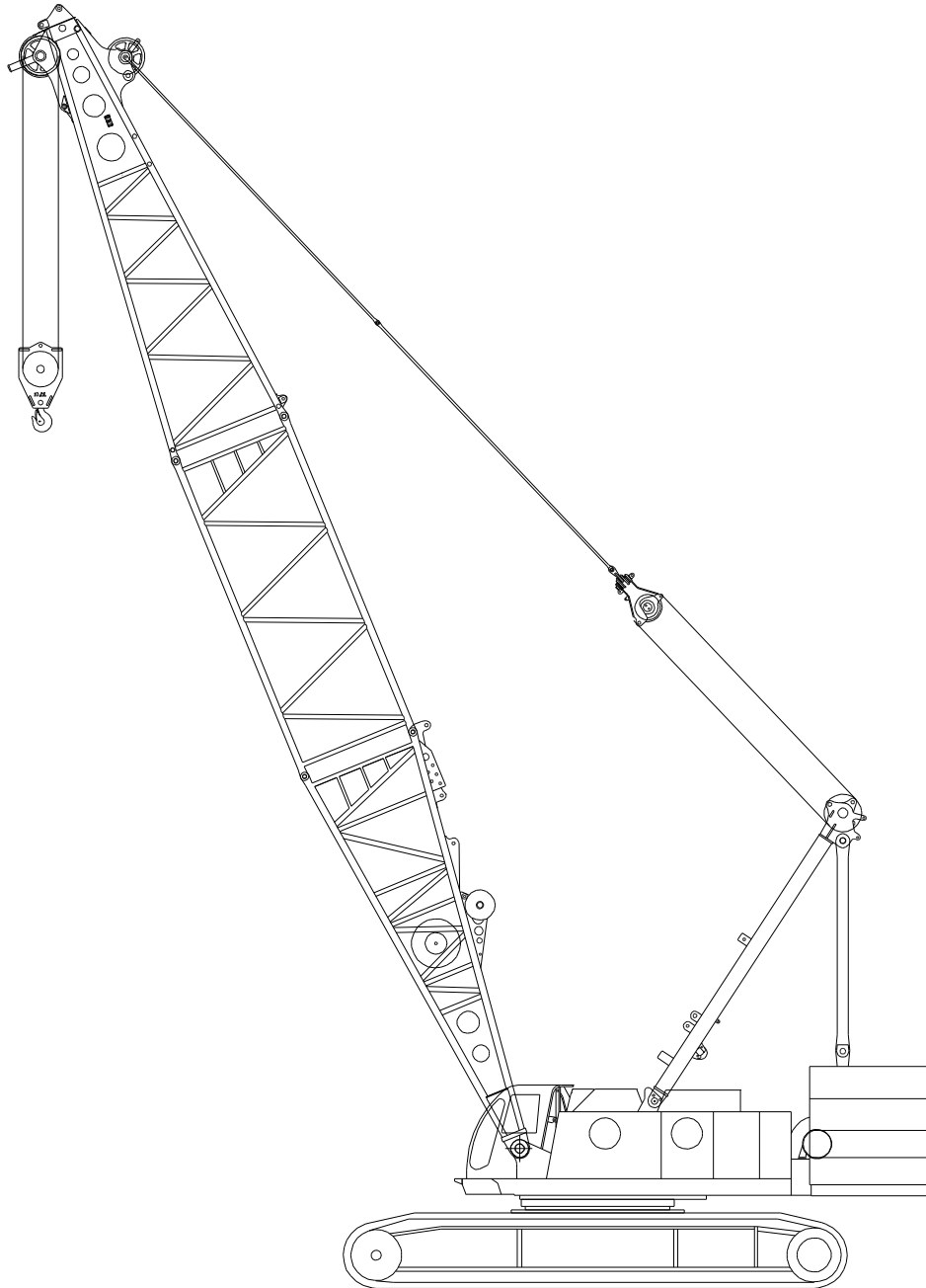


sarens
group

www.sarens.com

HITACHI SCX 2500

250 TON



nothing too heavy, nothing too high



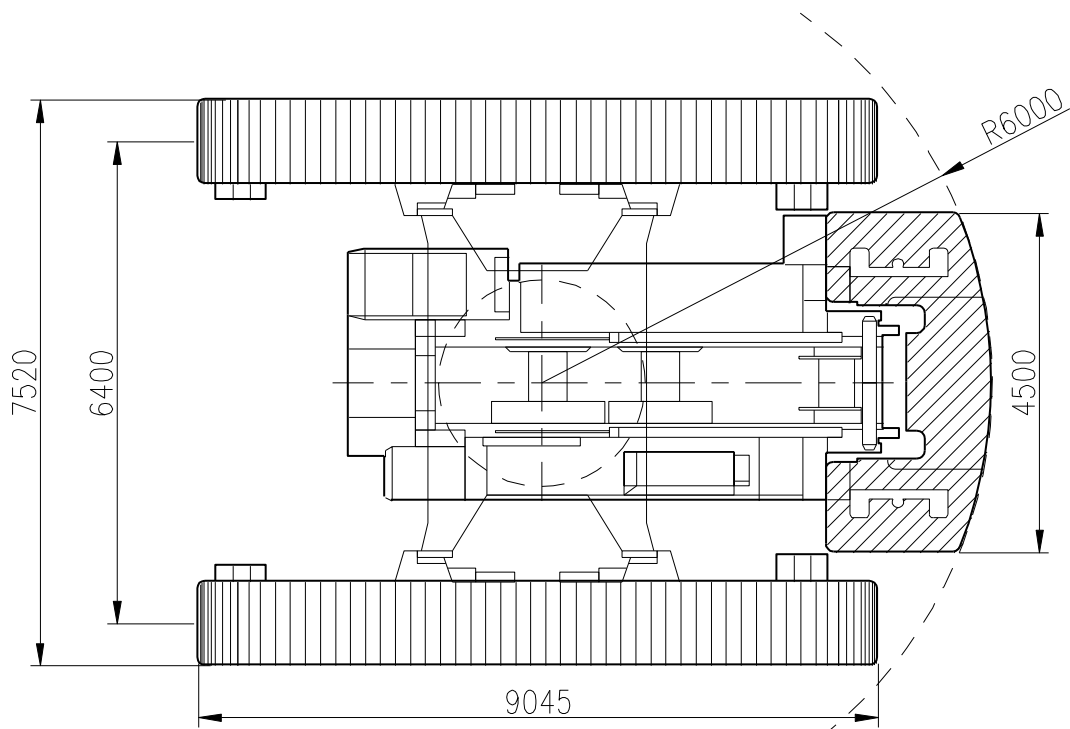
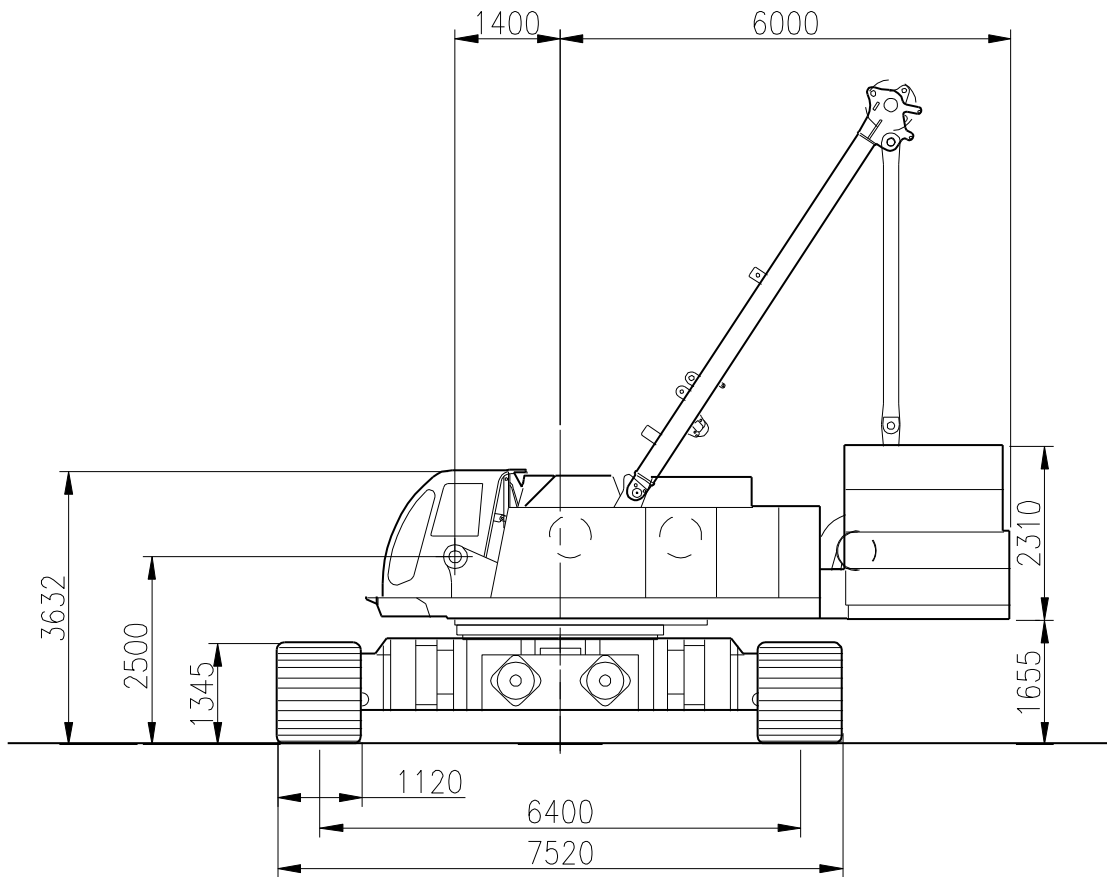


HITACHI SCX 2500

Dimensions
Dimensions

250 TON

Abmessungen
Afmetingen





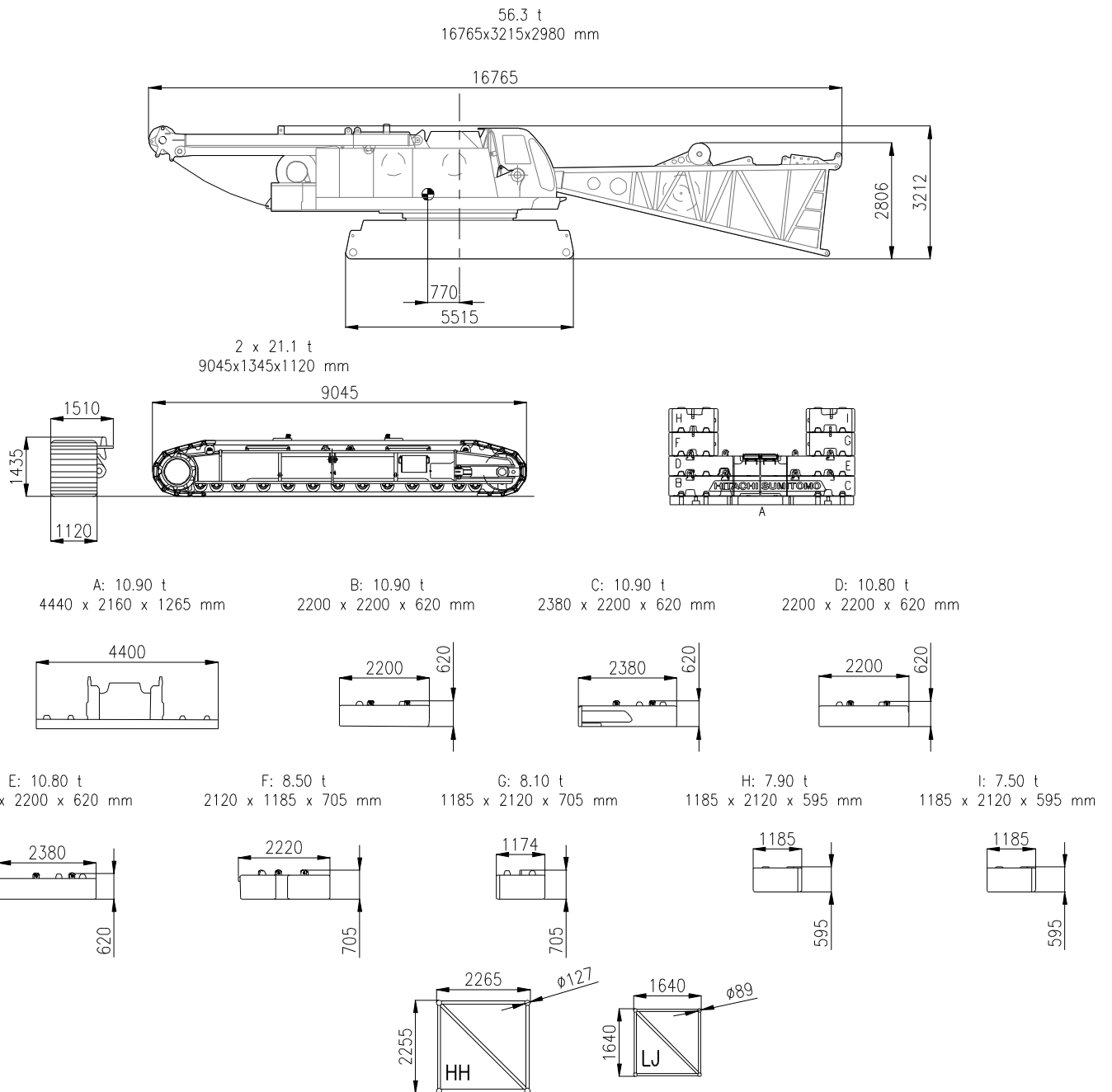
HITACHI SCX 2500

250 TON

Dimensions
Dimensions

Abmessungen
Afmetingen

Superstructure with carbody + winch I & II Partie supérieure avec carter central + treuil I & II Oberwagen mit Mittelstück Winde I & II Bovenwagen met centraal onderstelgedeelte I & II	56.3 t
Crawler unit Bâti de chenille Raupe Rups	2 x 21.1 t
Counterweight Contrepoids Gegengewicht Tegengewicht	86.3 t



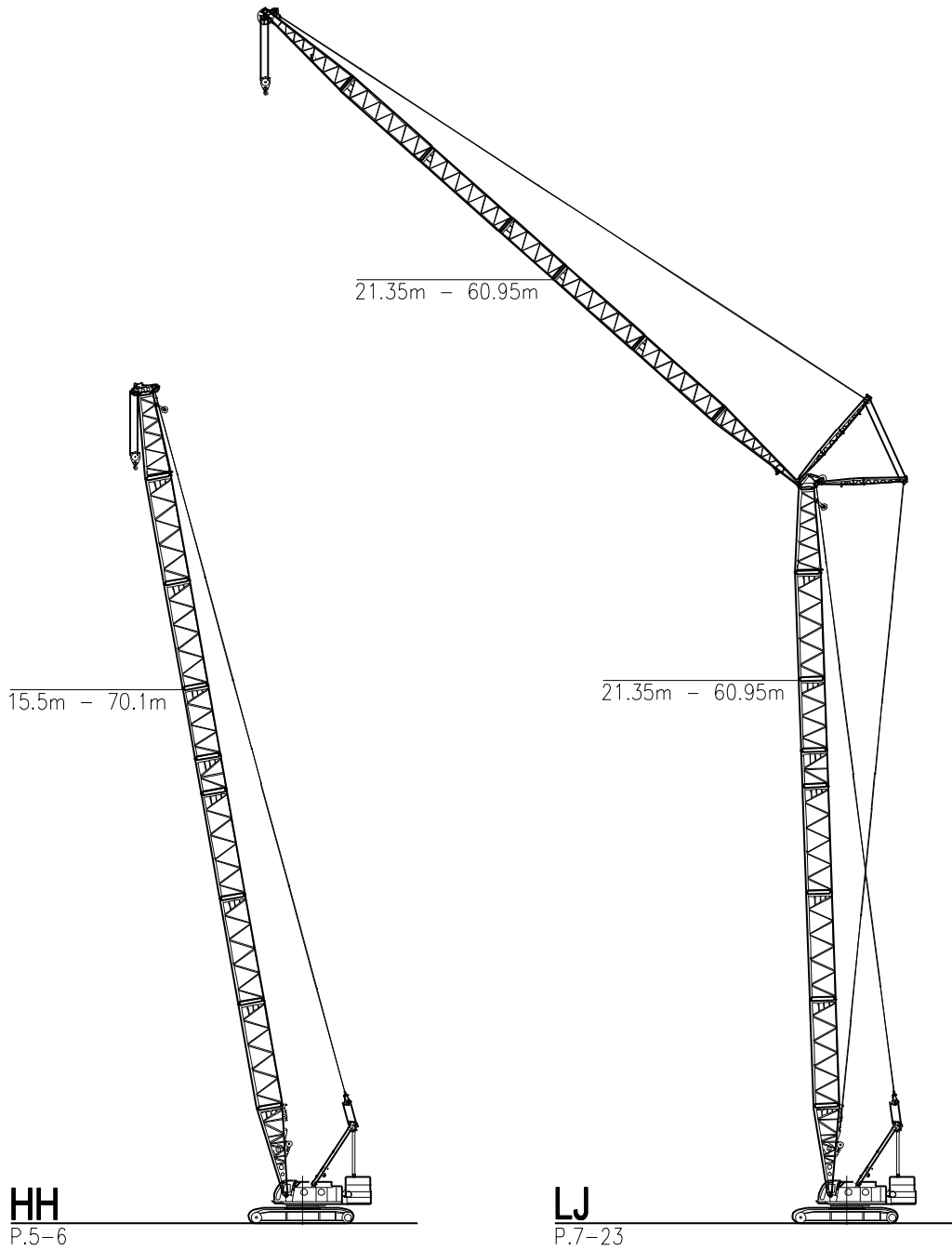


HITACHI SCX 2500

Configurations
Configurations

250 TON

Konfigurationen
Configuraties





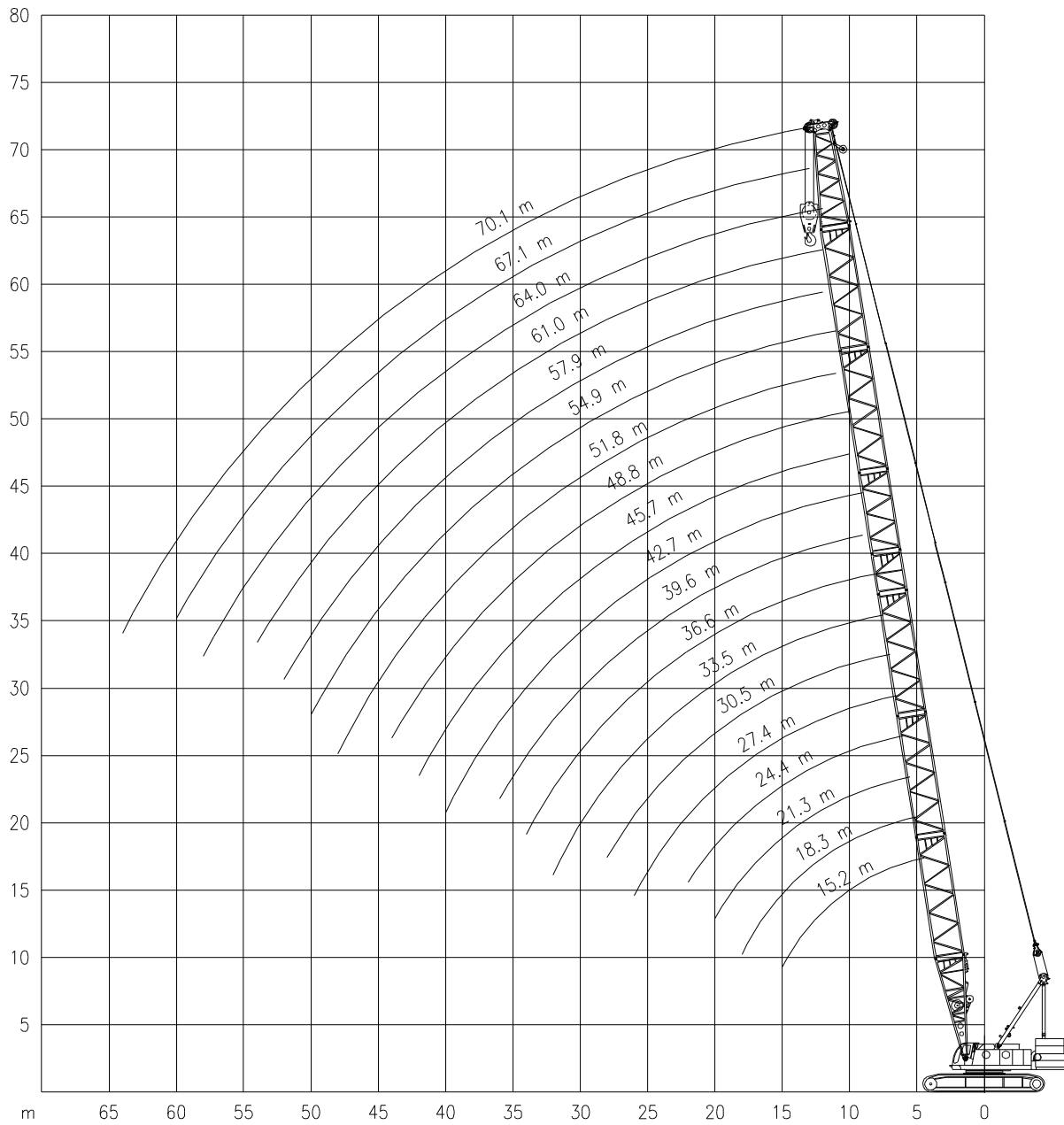
HITACHI SCX 2500

Working ranges
Portées

250 TON

Arbeitsbereiche
Werkbereich

HH





HITACHI SCX 2500

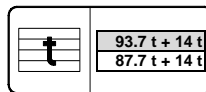
250 TON

Lifting capacities
Capacités

Tragfähigkeiten
Capaciteiten



HH



	15.25m	18.30 m	21.35m	24.40m	27.45m	30.50m	33.50m	36.55m	39.60m	42.65m
	t	t	t	t	t	t	t	t	t	t
4.5	250.0	(5.4m)	(5.9m)	-	-	-	-	-	-	-
5.0	231.0	214.0	192.0	(6.4m)	-	-	-	-	-	-
6.0	191.0	190.0	190.0	178.0	-	(7.5m)	-	-	-	-
7.0	164.0	163.0	163.0	163.0	162.0	152.0	-	(8.5m)	-	-
8.0	144.0	143.0	143.0	143.0	143.0	143.0	135.0	120.0	(9.1m)	(9.6m)
9.0	128.0	128.0	128.0	127.0	127.0	127.0	126.0	119.0	118.0	105.0
10.0	115.0	115.0	115.0	115.0	115.0	114.0	111.0	108.0	106.0	103.0
12.0	92.3	91.9	95.1	94.7	94.2	92.0	89.7	87.3	85.7	83.4
14.0	74.3	73.8	77.4	77.1	76.9	76.1	74.7	73.0	71.9	70.0
16.0	68.3	61.5	64.2	63.9	63.6	63.2	63.0	62.1	61.5	60.0
18.0	(14.9m)	54.5	54.6	54.3	54.0	53.5	53.2	52.8	52.8	52.2
20.0	-	(17.5m)	47.4	47.0	46.7	46.2	46.0	45.5	45.5	45.1
22.0	-	-	46.6	41.4	41.0	40.5	40.2	39.8	39.8	39.4
24.0	-	-	(20.2m)	39.1	36.4	35.9	35.6	35.1	35.1	34.7
26.0	-	-	-	(22.8m)	33.6	32.1	31.8	31.3	31.3	30.8
28.0	-	-	-	-	(25.5m)	29.0	28.6	28.1	28.1	27.6
30.0	-	-	-	-	-	28.8	26.0	25.4	25.4	24.9
32.0	-	-	-	-	-	(28.1m)	25.1	23.2	23.1	22.6
34.0	-	-	-	-	-	-	(30.8m)	21.8	21.1	20.6
36.0	-	-	-	-	-	-	-	(33.4m)	19.4	18.8
38.0	-	-	-	-	-	-	-	-	-	17.3
38.7	-	-	-	-	-	-	-	-	-	16.8

	45.70m	48.75m	51.80m	54.85m	57.90m	60.95m	64.00m	67.05m	70.10m
	t	t	t	t	t	t	t	t	t
9.0	(10.1m)	(10.7m)	(11.2m)	(11.7m)	-	-	-	-	-
10.0	93.5	86.9	79.0	70.7	(12.2m)	(12.8m)	(13.3m)	(13.8m)	-
12.0	81.7	79.7	76.4	69.6	63.6	56.9	51.1	42.9	(14.4m)
14.0	68.7	67.1	65.6	64.3	60.1	54.8	50.0	42.8	39.9
16.0	59.0	57.6	56.4	55.3	54.4	51.7	47.1	41.5	38.9
18.0	51.3	50.1	49.1	48.2	47.5	46.6	44.6	40.4	36.8
20.0	45.1	44.2	43.3	42.5	41.9	41.1	40.2	38.3	34.9
22.0	39.3	38.9	38.5	37.8	37.2	36.5	35.8	35.0	33.2
24.0	34.6	34.2	34.0	33.8	33.3	32.7	32.0	31.3	30.7
26.0	30.8	30.4	30.1	30.0	29.8	29.4	28.8	28.1	27.6
28.0	27.5	27.1	26.8	26.7	26.6	26.4	26.0	25.4	24.9
30.0	24.8	24.4	24.1	23.9	23.8	23.6	23.4	23.0	22.6
32.0	22.4	22.0	21.7	21.6	21.5	21.2	21.0	20.7	20.5
34.0	20.4	20.0	19.6	19.5	19.4	19.2	18.9	18.6	18.4
36.0	18.6	18.2	17.8	17.7	17.6	17.3	17.1	16.8	16.6
38.0	17.1	16.6	16.3	16.1	16.0	15.7	15.5	15.2	15.0
40.0	15.7	15.2	14.9	14.7	14.6	14.3	14.0	13.7	13.5
42.0	14.9	14.0	13.6	13.4	13.3	13.0	12.8	12.4	12.3
44.0	(41.3m)	12.9	12.5	12.3	12.2	11.9	11.6	11.3	11.1
46.0	-	-	11.5	11.3	11.1	10.8	10.6	10.3	10.0
48.0	-	-	11.2	10.4	10.2	9.9	9.6	9.3	9.1
50.0	-	-	(46.6m)	9.9	9.4	9.1	8.8	8.4	8.2
52.0	-	-	-	(49.2m)	8.6	8.3	8.0	7.7	7.4
54.0	-	-	-	-	(51.9m)	7.6	7.3	7.0	6.7
56.0	-	-	-	-	-	7.4	6.6	6.3	6.0
58.0	-	-	-	-	-	(54.5m)	6.2	5.7	5.4
62.0	-	-	-	-	-	-	(57.2m)	5.2	4.8
62.0	-	-	-	-	-	-	-	(59.8m)	4.3
62.4	-	-	-	-	-	-	-	-	4.2

Values in brackets () represented below or above load capacity, indicate exact radius. / Les valeurs entre parenthèses () notées au-dessus ou en-dessous des capacités, indiquent les portées exactes (pour les dernières). / Die Werten in Klammern unten oder oben den Tragfähigkeiten bedeuten die genaue Ausladung. / Waarden tussen haakjes () onder of boven capaciteiten geven de exacte radius aan.



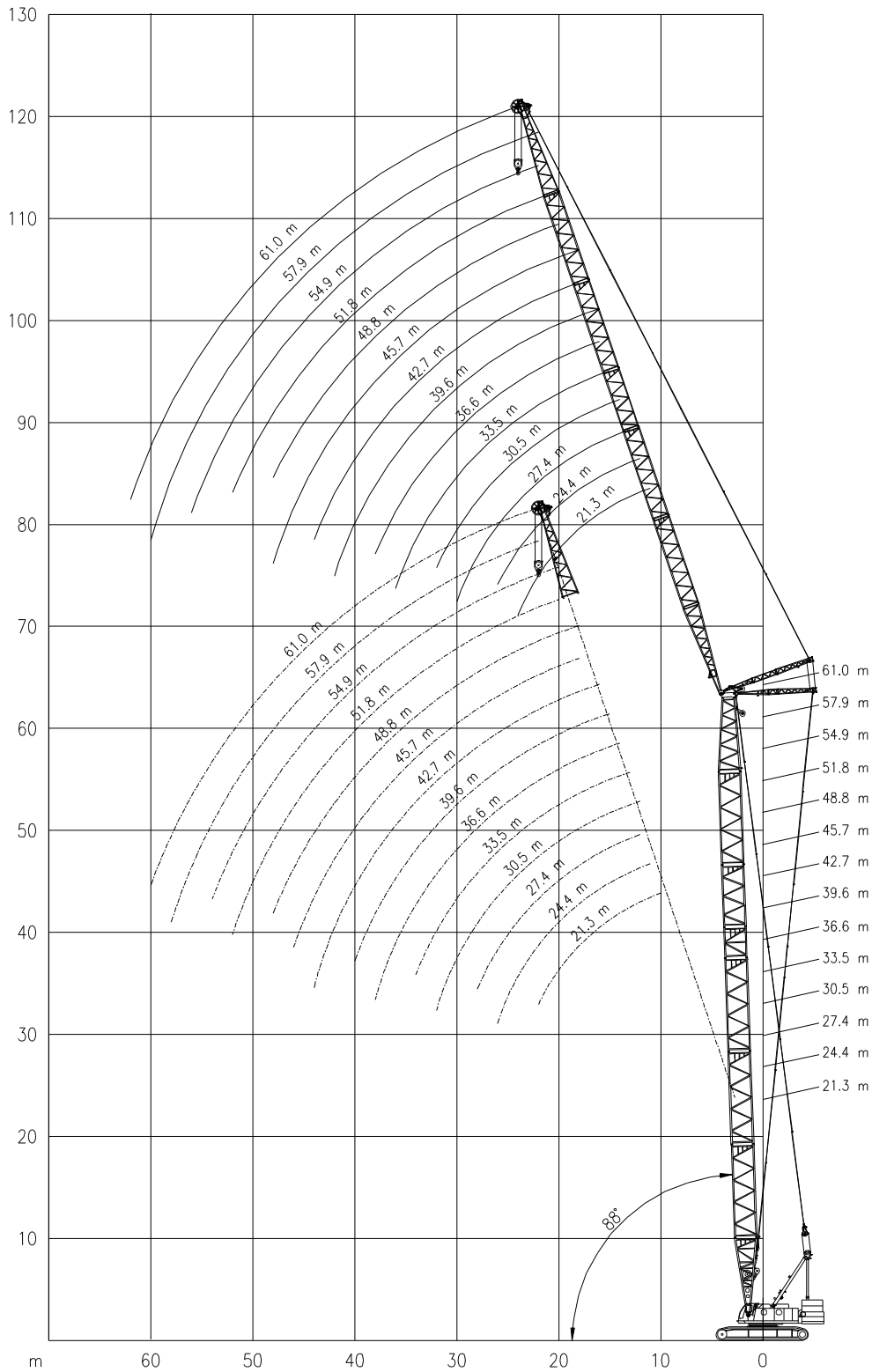
HITACHI SCX 2500

Working ranges
Portées

250 TON

Arbeitsbereiche
Werkbereich

LJ-88°





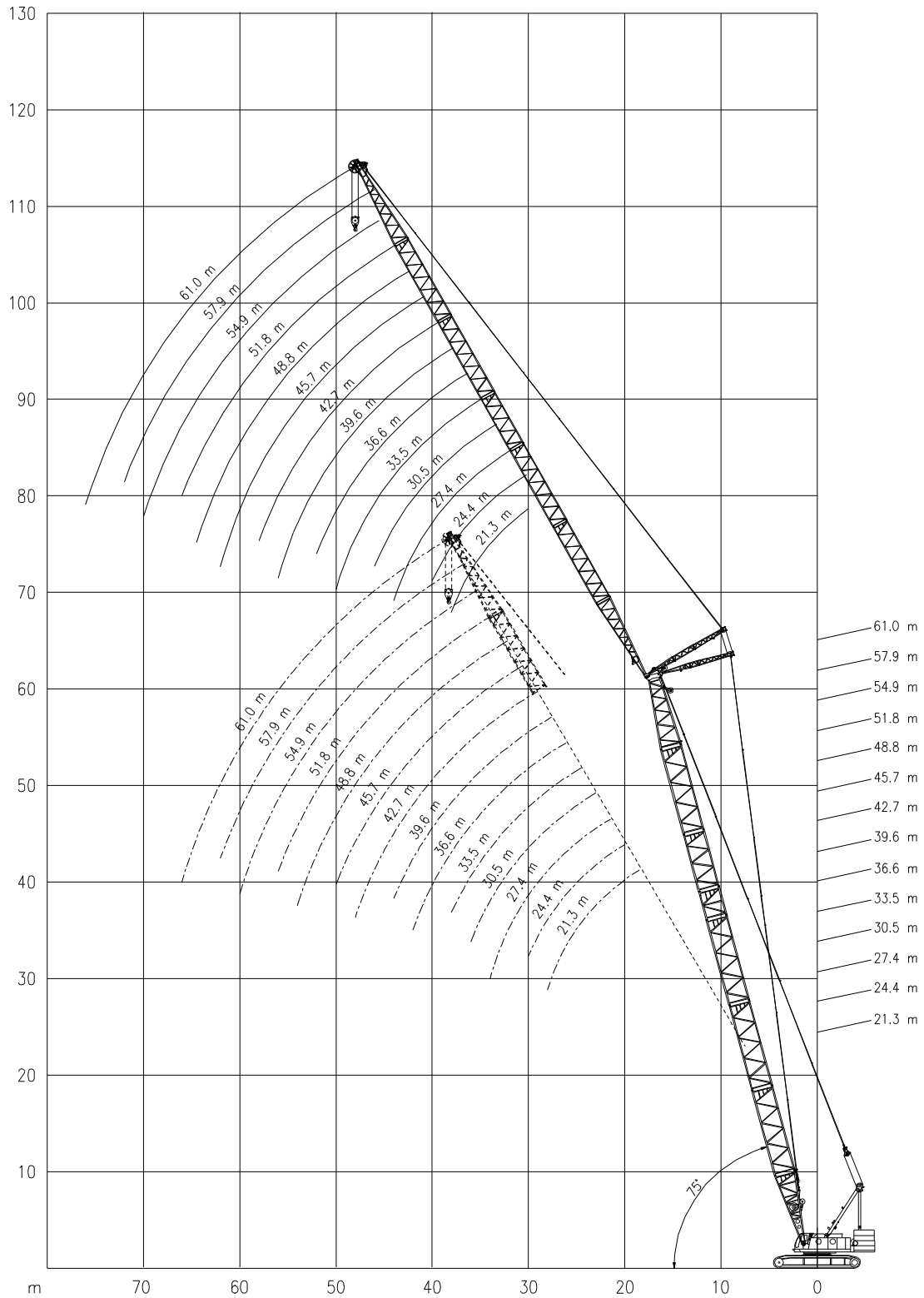
HITACHI SCX 2500

Working ranges
Portées

250 TON

Arbeitsbereiche
Werkbereich

LJ-75°





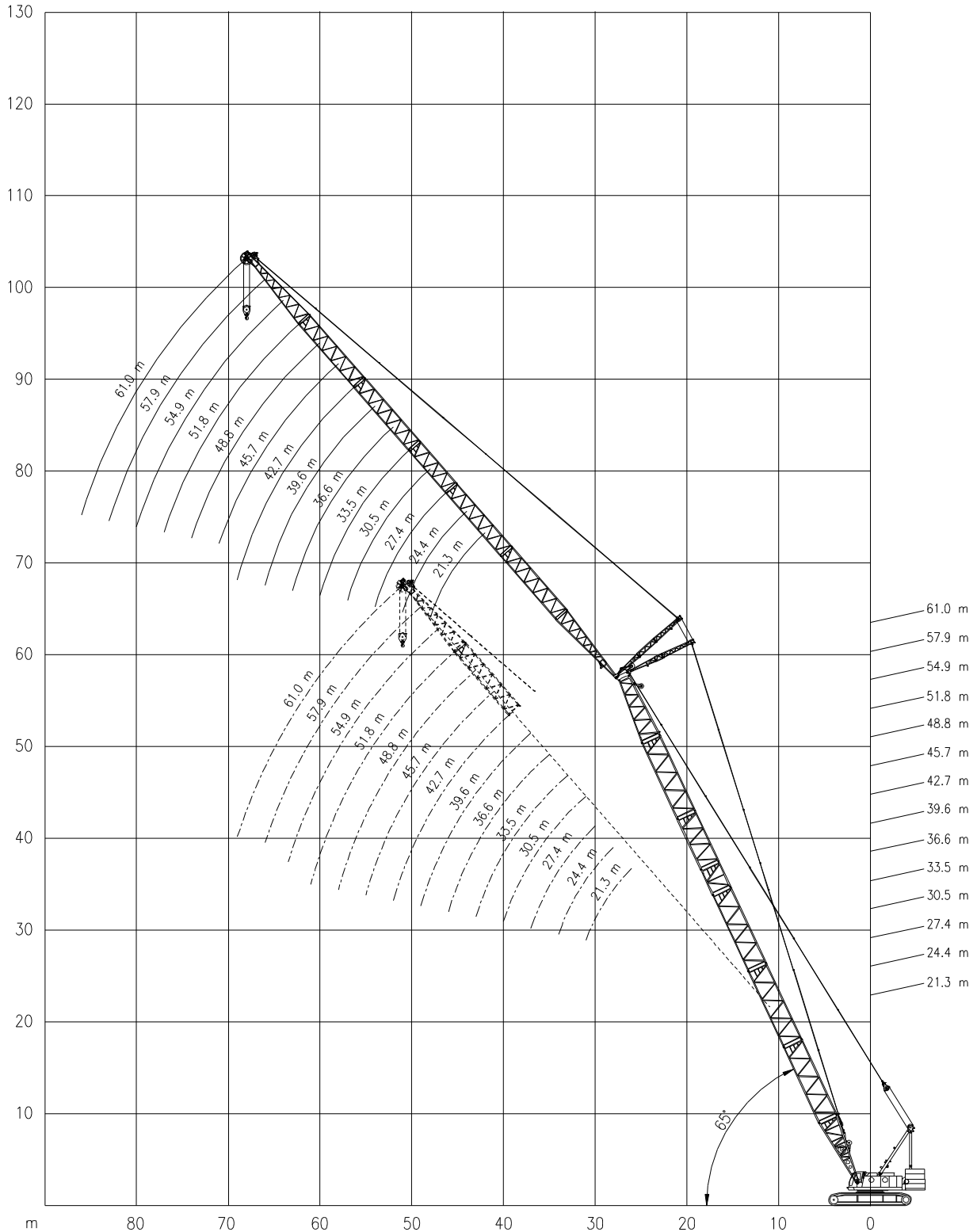
HITACHI SCX 2500

Working ranges
Portées

250 TON

Arbeitsbereiche
Werkbereich

LJ-65°





HITACHI SCX 2500

250 TON

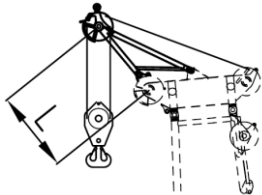
Working speeds
Vitesses de travail

Arbeitsgeschwindigkeiten
Werksnelheden

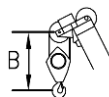
Mechanisms Mécanismes Antriebe Aandrijvingen	Speeds Vitesses Geschwindigkeiten Snelheden	Rope diameter Diamètre du câble Seildurchmesser Kabeldiameter	Single line pull Effort sur brin simple Zulässiger Seilzug je strang Toegelaten trekkraft / part	Length of ropes Longueur des cables Länge der Seile Kabellänge
Main hoist Levage sur flèche Hubwerk 1 Hijslieër 1	0 – 120 m/min	28 mm	245 kN	410 m
Auxiliary hoist Levage sur flèche Hubwerk 2 Hijslieër 2	0 – 120 m/min	28 mm	245 kN	350 m
D-operation Version D D-Betrieb D-uitvoering	0 – 160 m/min	22.4 mm	165 kN	290 m
Hoist A-frame Relevage chevalet Einziehwerk Lier A-frame	2 x 0 – 24 m/min	22.4 mm	2 x 156 kN	310 m
Slewing gear Orientation Drehwerk Zwenkwerk	1 – 1.7 Rev./min			
Travel speed Vitesse sur route Fahrgeschwindigkeit Rijsnelheid	0 – 1.2 km/h			

Runner Crochet rapide

Mastnase Giekneus

	Capacity Capacité Tragfähigkeit Capaciteit	Max. 13.5t	L= 1535 mm
---	---	------------	------------

Hook Block / Crane hook Crochet mouflé / Crochet simple



Unterflasche / Hakengehänge Kraanblok / Kraanhaak

Capacity Capacité Tragfähigkeit Capaciteit	Number of sheaves Nombre de poulies Anzahl der Rollen Aantal schijven	Number of lines Nombre de brins Strangzahl Aantal parten	Weight Poids Gewicht Gewicht	"B"
SWL 250 t / 200 t / 135 t	10	20 / 16 / 10	3.6 t / 2.6 t	10.0 m / 6.0 m / 4.7 m
SWL 80 t	3	6	1.4 t	5.2 m
SWL 35 t	1	3	0.9 t	4.6 m
SWL 13.5 t	-	1	0.6 t	5.5 m